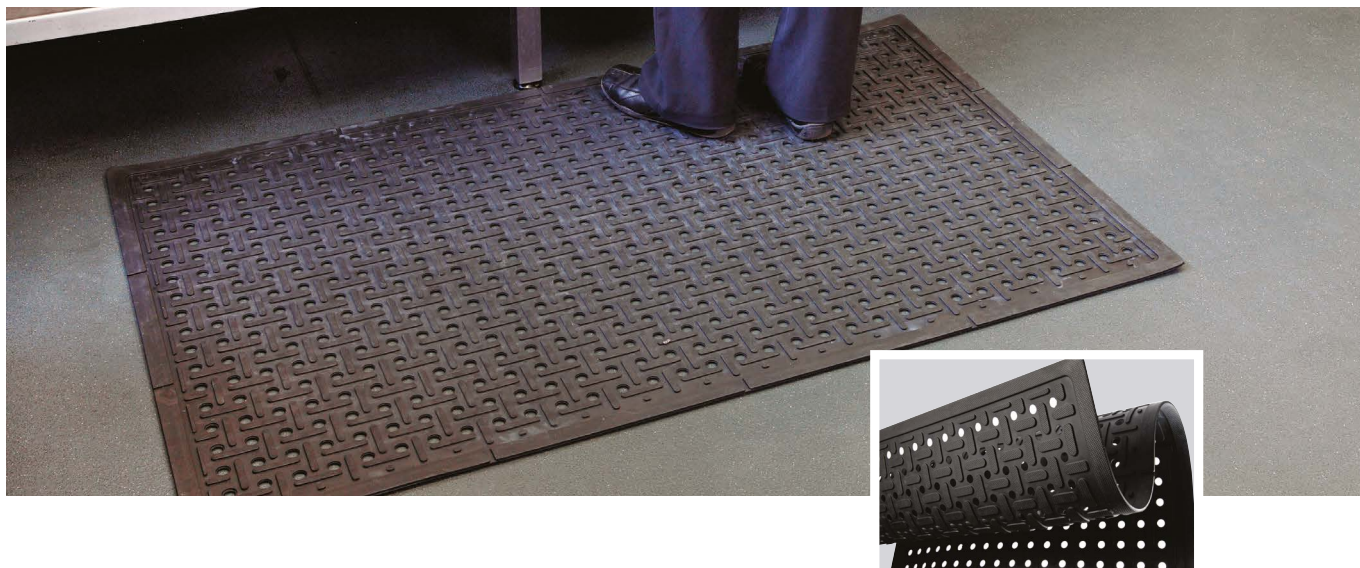


# Ultraflow Mat

➤ Providing extra support for employees standing on their feet for prolonged periods Ultraflow mats are a comfort mat specially designed for wet areas such as bars and kitchens



The UltraFlow mat will provide comfort to your feet, legs, and back. Specially designed for use in wet areas, the durable surface texture and design helps to prevent slipping, while the studded pattern on the bottom permits drainage and air circulation.

The UltraFlow mat was developed to provide premium performance in kitchens, bars, freezers and food processing areas - to name just a few. The mat is produced using a patented nitrile rubber construction with anti-bacterial properties, which provides a unique flow through design. It is oil and solvent resistant.

## Key Benefits :

Ultraflow mats are the best solution for environments where hygiene is critical. They are also the safest, minimising the risk of slips & trips. Lastly, they offer health benefits to staff who work on their feet for long periods.

## Product Specification

Composition	100% nitrile rubber mat
Size	84 x 136cm
Thickness	8mm
Colour	Black

## Key Features :

The Ultraflow mat is perfect for environments where cleanliness & hygiene is paramount e.g. food preparation. The mat can be easily lifted & the floor beneath cleaned.

The mat itself can easily be removed, replaced & cleaned. It also provides a more comfortable surface for staff under foot as they move about the blood circulation and changes in posture helps reduce lower back and leg pain. It also insulates workers from cold floors, helping to reduce physical fatigue.

For further information please contact us on :

United Kingdom : 029 2080 9098 | [productinfo@phs.co.uk](mailto:productinfo@phs.co.uk) | [www.phs.co.uk](http://www.phs.co.uk)

Republic of Ireland : 01 643 4680 | [productinfo@phswashrooms.ie](mailto:productinfo@phswashrooms.ie) | [www.phswashrooms.ie](http://www.phswashrooms.ie)