





“ PHS have supplied Pennyhill Park with a number of floor cleaning services. With each job **I’ve been delighted with the work**, as the floors have looked brand new. **I give them my full recommendation!** ”

On-site cleaners do a great job with the day to day cleaning of your site, but situations can arise that require greater cleaning specialism, be it because of expertise or the requirement for specialist equipment.

**That’s where PHS can help, as we provide a range of specialist cleaning services for both the interior and exterior of buildings, including:**

- **Floor cleaning**, restoration and maintenance
- **Kitchen deep cleaning** and grease extraction systems
- **Upholstery** cleaning
- **Clinical** and decontamination cleaning
- **High level** and window cleaning
- **Exterior** site cleaning

We provide specialist cleaning services for both the inside and outside of businesses, to keep all areas of a site looking clean and smart.

Our team of expert technicians work to the highest standards, so no matter what the area to be cleaned, our customers are delighted with the finish.

All cleaning is carried out at a time which is convenient to a site in order to ensure minimum disruption.

With our nationwide service, we can help businesses, whether a single or multi-site operation, no matter where they’re located.

## Why choose PHS



**Experts** in specialist cleaning services



**Nationwide** service



**Trained**, expert service technicians





“ PHS provided their services across an estate of over 200 sites. **They not only achieved a high standard of appearance on our carpets**, but also saved us considerable sums of money and environmental impact by ensuring our carpets reach their full lifecycle. ”

Head of Cleaning and Soft Services, Mapeley Estates

# Floor Cleaning, Restoration and Maintenance

A good first impression starts with flooring. As well as contributing to the look and feel of any site, floors play a crucial part in its safety with respect to slips, trips and falls.

Whilst few take note of a clean floor, most will notice a dirty one – poorly maintained floors can bring the whole look of a site down, with the investment in quality floor coverings lost in an instant.

A correct maintenance programme not only ensures a clean and professional site image, but also prolongs the life expectancy of floors. So if flooring lasts longer, capital outlay is reduced and less waste is sent to landfill (as the majority of flooring sent to landfill is replaced due to its poor aesthetic condition rather than it being truly worn out).

With many schemes emerging to deal with the problem of used flooring, the most effective way of reducing its environmental impact is to extend its useful life through a programme of correct maintenance.

## Ongoing Floor Protection

- In the majority of instances, floors become damaged and dirty from the ingress of dirt from the outside, and the most effective way to prevent this is to use matting.
- Entrance mats are designed to capture dirt and moisture at the door, and should be regularly cleaned to ensure they stay working at maximum efficiency. PHS provide a wide range of mats and matting in colours, sizes and designs to suit any site.

## How it works

- Our expert consultants visit a site to get a complete understanding of requirements
- A schedule of work is agreed at a time to suit the site
- Our uniformed, DBS checked technicians attend site to carry out the cleaning
- Upon completion, a courtesy call is made to ensure customer satisfaction with all work carried out





# Carpets

In a business environment, carpets need more than a daily vacuuming. A regular maintenance programme will help to prolong their life, and keep them looking good for longer.

## CASE STUDY

### Mapeley Estates, Nationwide

With high profile tenanted sites, Mapeley have to ensure that the interiors of their buildings are kept to a high standard.

PHS provided Mapeley Estates with carpet cleaning services at sites ranging from 500m<sup>2</sup> to 80,000m<sup>2</sup>, both on an ongoing maintenance programme and with one off cleans.

In many cases, businesses replace carpets as they look dirty or stained, but this can be a premature reaction with companies throwing thousands of pounds away needlessly.

#### Restoration Clean

This provides a one off deep restoration clean for carpets, and can bring them back to an acceptable condition from where they can be maintained.

#### Maintenance Programme

Carpets are subject to different levels of soiling at different areas throughout the building, for example reception area, walkways and drinks vending areas are likely to require cleaning more often, therefore our floor maintenance programmes reflect this.

PHS use a variety of techniques which can bring even the most heavily soiled carpets back to an acceptable condition from where they can be maintained, prolonging the life of the carpet and budget.

We provide

- **A full site audit** taking into account the current condition of the carpet, area usage and types and levels of soiling
- **A maintenance programme** tailored to budget and site requirements
- **Advice** for cleaners on daily and spot stain cleaning methods

Our expert service includes:

- **Restorative Vacuuming.** We use a specialist pile lifting vacuum, to remove the maximum amount of dry soiling from the carpet fibres
- **Soil Removal.** We evaluate the level and type of staining on the carpet, so cleaning agents and processes can be carefully matched for the best results
- **Stain Removal.** Stains are spot treated with our unique stain removal product. This can also be supplied to cleaning staff to use on stains as and when they appear

### Recommended cleaning frequencies

Area	Annually	Quarterly	Daily
Main Office	●		
Walkways		●	
Barrier Matting		●	
Stain Removal			●





# Stone Floor Cleaning and Restoration

**With extensive experience in the cleaning and restoration of all types of stone flooring, we use the latest equipment and techniques in polishing and grinding to clean and restore stone floors.**

## CASE STUDY

### St. Pancras International Station, London

After the main restoration of St.Pancras International Station was completed, the terrazzo concourse flooring required treating in order to achieve an easy to maintain, attractive finish in keeping with the rest of the station. As the station was operational, only a small five hour working window was available at any one time so as not to disrupt the day to day running of the station.

PHS met these requirements using a method which not only delivered an excellent finish, but ensured the floor was sealed and available for use within the required work window.

#### Deep Cleaning

We can dramatically improve the look of heavily damaged or stained floors, using the latest stone care products. Once cleaned, we will advise on the best methods to use on a daily basis to keep floors looking their best.

#### Re-polishing

If a floor has only superficial scratching or a slightly dulled surface, we can re-polish the floor using either a chemical process or light diamond abrasives, returning it to a high standard of appearance.

#### Full Restoration

A deeply scratched or excessively worn floor will require full restoration. This involves the floor being ground through four or five grades of diamond discs, the first being a coarse cut to level the floor and remove deep scratches. The grades then become progressively finer until the required finish is achieved. The final stage involves a polishing process, leaving the floor with a high gloss finish.

#### Sealing

All types of stone are porous to some degree so should have a seal applied. This makes the stone more resistant to future staining, and much easier to clean. If in doubt whether a floor has already been sealed, we can carry out a simple test to determine this.

We use the latest equipment and techniques in polishing and diamond grinding to clean and restore stone floors, as we know that thousands of years of nature's work to create beautiful stone formations can be ruined in minutes if the wrong cleaning technique or product is used. Our service covers all stone floor types, including:

- Marble
- Limestone
- Travertine
- Granite
- Sandstone
- Terrazzo





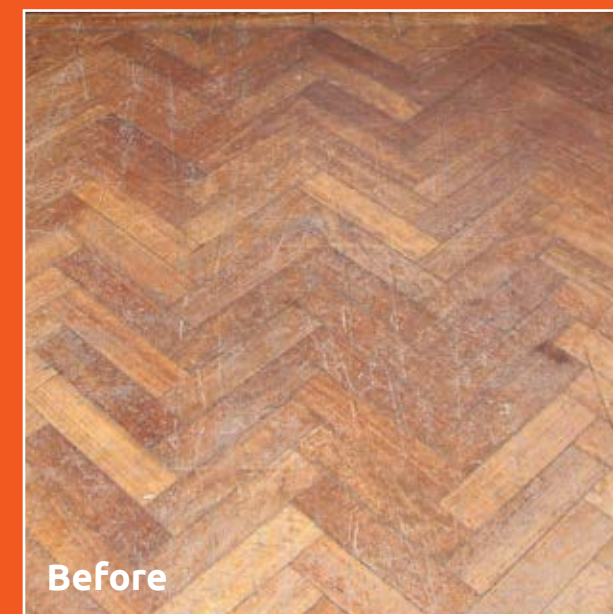
## Wood Floor Cleaning and Restoration

**Wood has always been a popular floor covering due to its hardwearing nature combined with a beautiful appearance.**

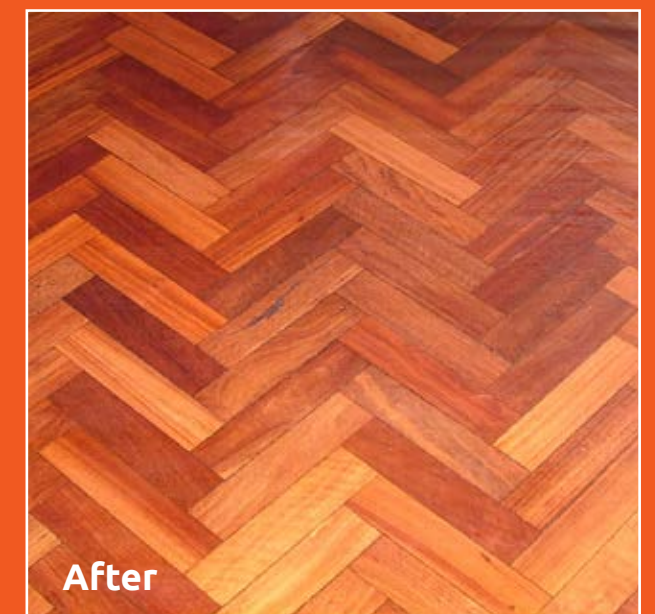
## CASE STUDY

### **Pennyhill Park Hotel & Spa, Surrey**

When the studio floor in the award winning spa at this five star resort started to show signs of wear, PHS supplied a full restoration service, sanding the floors to remove the damaged seal, and reapplying a specialist wood seal to provide a slip resistant finish. PHS also completed restoration of a parquet floor that had been damaged by water and a screen and re-seal of the main hall's wood floor.



**Before**



**After**

The key to maintaining the appearance of a wood floor is the seal applied to the surface. If the seal is worn through, and bare timber is exposed, the flooring will become damaged and marked. PHS offers a variety of services designed to make the most of your wood flooring.

#### **Full Restoration**

When a wood floor has been badly scratched, or the seal has worn through, it will require a complete restoration process. This involves repairing sections as required, and then sanding the wood through four grades, each grade getting progressively finer until a final seal is applied. Using this method, even badly worn and damaged floors can be restored to an impressive standard.

PHS uses the latest sanding equipment which has a 98% filtration system fitted ensuring minimal dust and site disruption.

#### **Screen and Re-Seal**

This helps to ensure that the seal on the floors doesn't become worn through and helps to avoid the requirement for a full floor restoration. As a wood floor that is periodically screened and re-sealed will have a longer lifespan with only light maintenance required between services.

The screening process involves a light sanding to key the surface of the existing seal, which removes light scratches, before the new seal is applied. This offers a fast and non-intrusive method of maintenance, ensuring the wood is protected at all times.

PHS only uses the best wood finishing products, offering advice on the most effective seal or oil for wood floors to ensure a beautiful, long-lasting finish.





## Hard Floor Cleaning

**Although hard floors require less specialised maintenance techniques than wood, carpet or stone, they will still suffer from damage and dirt build up if incorrectly maintained.**

## CASE STUDY

### **South Devon College, Paignton**

The floors and walkways in South Devon College had to withstand the daily wear and tear of hundreds of pairs of student feet, especially as when the vinyl flooring had been installed, it hadn't been sealed.

The company brought in PHS to provide a complete restoration clean of all the vinyl hallway flooring (approx 550m<sup>2</sup>), and also apply a protective seal. With the restoration complete, PHS provided full training for the on-site cleaners on how best to care for the floor on a daily basis to ensure it remained looking at its best.

Hard floor coverings which can should be properly maintained include:

- Ceramic tiles
- Linoleum
- Vinyl
- Safety flooring

### **Deep Clean**

Over time, through neglect or poor maintenance, soiling builds up and hard floors can start to look unsightly. A thorough deep clean will remove the ingrained dirt and return the floor to a high standard of appearance.

### **Strip and Seal**

Mainly used on linoleum and vinyl floors, the application of a surface seal protects the fabric of the flooring and enhances its appearance.

Over time the seal on these floors will become worn and should be replaced to prevent damage occurring to the material beneath.

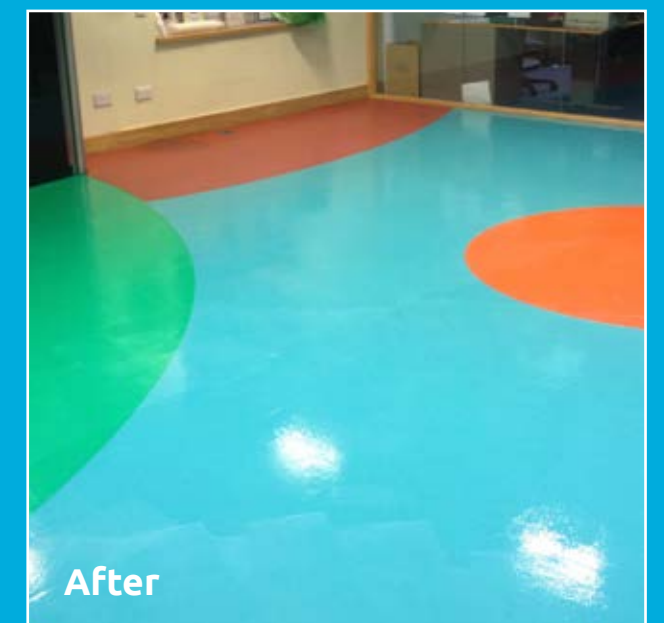
The old seal is removed, then the floor is thoroughly cleaned and a new surface seal applied. This service should be carried out on an annual basis to ensure the floor is fully protected at all times.





## Floor Treatments

**PHS provide a range of treatments to improve the safety or appearance of your flooring.**



### Anti-Slip Flooring Treatment

When subject to spills or the ingress of moisture, some floors can become slippery and an accident waiting to happen. Often, replacing flooring simply isn't an option, which is why our anti-slip flooring treatment offers the ideal solution by making your existing floors safer.

- **Increases** the floors slip resistance
- **Keeps** the floors appearance
- **Creates** a hard wearing anti-slip surface
- **Provides** a cost effective solution at a fraction of the cost of floor replacement

### Floor Re-colouring

Replacing a faded or discoloured vinyl flooring installation can be expensive and wasteful.

PHS offers a floor re-colouring option which can create a unique, new design over your existing flooring, saving money and reducing waste to landfill.

The PU treatment is available in over 200 colours, and numerous design options, so a unique design can be created to match requirements.





## Grease Extraction Deep Clean

**Fire is a huge concern in any business but in commercial kitchens with grease extraction systems, the risk is substantially higher.**

Deep cleaning your grease extraction systems can significantly reduce the risk of fire, and help to protect business premises.

Our service involves a thorough clean of your grease extraction systems, and using our industry knowledge, we ensure that the work undertaken meets or exceeds the current industry standards and regulations.

We clean all accessible areas of ducting, filters and housings using appropriate degreasing chemicals. These are then washed, dried and their condition checked with any defects reported.

On completion we provide certification to demonstrate the work that has been done. We can also provide before and after photographs of the equipment and areas treated.

## Kitchen Deep Cleaning

**Over time, the surfaces and equipment in commercial kitchens can become coated with grease, which can create a potential health and safety hazard.**

Cleaning and removing this build up is both time consuming and hard work, and is a job best suited to the specialists.

Ideal for commercial kitchens of any size, our deep clean service ensures that your kitchen is thoroughly and hygienically cleaned. Our team remove the dirt and grease build up off surfaces including food preparation, production and serving areas, floors, heavy equipment and furniture and ensure that all areas of a kitchen are sanitised to regulatory standards.

Our kitchen deep clean can include:

- Floors, ceilings and walls
- Drains and gullies
- Canopies
- Filters and plenum chambers
- Equipment including ovens, steamers, deep-fat fryers, brat pans, convection and rotisserie ovens

On completion we provide certification to demonstrate the work that has been done, and can also provide before and after photographs of the equipment and areas treated, should your insurance company need them.





# Washroom Deep Cleaning

**Remove heavily ingrained stains, eliminate malodour and reduce cross-infection risks with a washroom deep clean.**

Whilst your washroom may look clean, the average cleaner has only 10-20 minutes to clean one washroom, which makes it very difficult to sanitise the areas you can't see. This can cause mould and grime to build up in those hard to reach areas, such as grouting and pipework, and cause long term damage to your facilities.

Our professional deep cleaning team use specialist cleaning equipment and chemicals to remove built up organic minerals and matter that harbour germs and stain your facilities. The team not only sanitise all surfaces within the washroom, they also clean the insides of the urinal, toilet and sink pipe work, reducing the chance of system blockages.

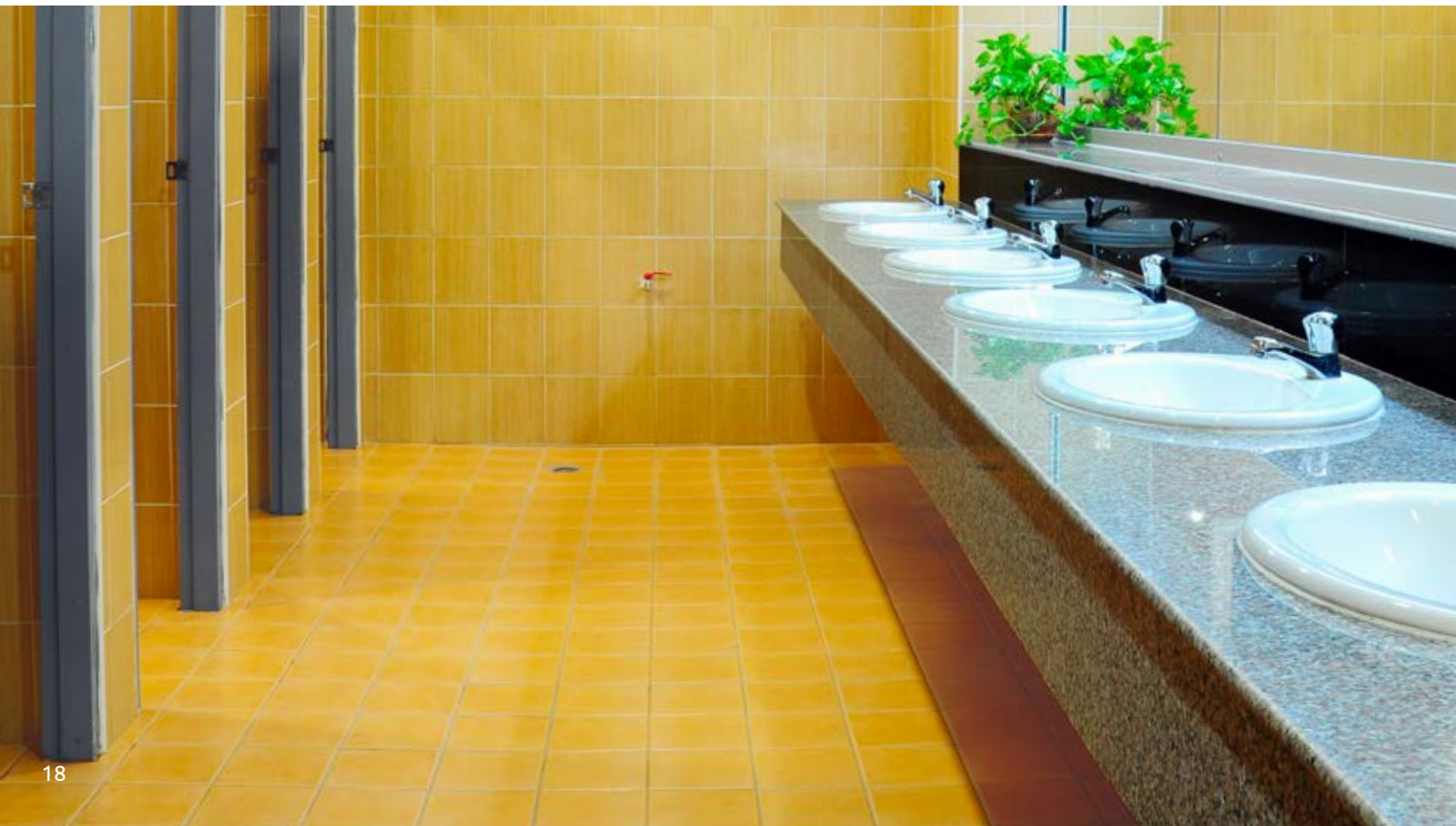
- Prolongs the life of your washroom facilities
- Aids drainage
- Removes ingrained stains and helps to eliminate malodour
- Reduces infection risks by thoroughly cleaning all areas
- Helps to create a hygienic and pleasant environment

- ✓ Specialised service
- ✓ All surfaces thoroughly cleaned
- ✓ Fully H&S compliant
- ✓ Nationwide service

## A Washroom Deep Clean Service that is second to none

Whether your washroom needs a one off deep clean or a regular preventative maintenance programme, we work with you to offer a service that best suits your requirements. Our fully trained, expert cleaning team ensure that your washrooms are left sanitised and thoroughly clean.

We can also provide you with before and after photographs of the areas treated, should you require them.



# Clinical and Decontamination Cleaning

**Situations can arise which require a level of hygiene cleaning that is above the requirements expected from your daily cleaning staff.**

## Clinical Cleaning

Environments that require clinical cleaning, such as hospitals and wards, carry a high risk of infection, therefore you need absolute confidence that the cleaning is being undertaken by professionals that are both thorough and efficient.

For hard to reach or porous surfaces, PHS a mechanical fogging service, ensuring that even the most difficult to reach sections of your workplace are sterilised. The cleaning chemicals used are effective against bacteria and viruses including MRSA, Clostridium difficile, E.Coli and Norovirus.

## Decontamination Cleaning

While thankfully rare, sometimes the worst can happen and in the event of a work accident, crime scene or death, PHS can provide a clinical cleaning and decontamination service to remove all trace of the incident.

By the nature of these incidents, decontamination cleans can be urgently required and critical to allow business to return to normal, therefore our technicians are sympathetic, discreet and efficient when they attend site.





---

## High Level & Window Cleaning

---

**It's easy to forget the cleaning of areas that are above eye level, and it's only when a problem occurs or becomes a hazard, that the need for regular inspection and cleaning is realised.**

The cleaning of high level areas requires specialised equipment and knowledge in order to be completed safely. At PHS we have the experience and expertise to take on all high level cleaning whether it be a complete surface clean, gutters or window cleaning, inside or out.

All our high level cleaning services include thorough risk assessments and we use a wide variety of equipment, from cherry pickers and scissor lifts to scaffold towers, MEWPS and booms.

All our technicians are fully trained and certified in PASMA and IPAF, and our abseilers are certified by the IRATA.

---

## Upholstery Cleaning

---

**Upholstered seating is part of the everyday working environment, and if your seating is dirty or stained, it can send the wrong message to your customers and staff.**

Our technicians use steam to remove stains and dirt from the upholstery and any chewing gum from the frame. An optional stain prevention treatment can then be applied to keep seating looking better for longer.

Improve the look of upholstered seating:

- |                             |   |
|-----------------------------|---|
| • <b>Cinemas</b>            | • <b>Offices</b>                            |
| • <b>Restaurants</b>        | • <b>Schools, colleges and universities</b> |
| • <b>Hotels</b>             | • <b>Pubs</b>                               |
| • <b>Conference centres</b> | • <b>Care homes</b>                         |







---

## Pressure Washing & Graffiti Removal

---

**The outside of business premises can be subject to a build-up of dirt and grime or may fall foul of graffiti artists and their paint.**

Our highly efficient pressure washing service is ideal for the removal of graffiti, surface staining, masonry paint, algae and chewing gum. Pressure washing will remove dirt from most surfaces including brick, stone, concrete, tarmac, paving, tiling and many roof and metal structures.

Our expert team can carry out this type of cleaning at either ground or elevated level, and our technicians are fully PASMA, IPAF and IRATA certified. We provide all the required equipment, removing the need for any expensive equipment hire.

---

## Pigeon Proofing

---

**Workplace buildings can be the perfect environment for pigeons to thrive, and if conditions are right they can prove to be a real problem for a building's general maintenance.**

The most common problems relating to pest fouling is unsightly staining, damage to surfaces and blocking of gutters, conduits and drains.

Aside from the potential hazards to the workplace, pigeons and other pests can also prove to be a significant hygiene issue.

PHS can help prevent these issues before they start as we provide bespoke pigeon proofing services that can protect staff and the working environment from the hazards associated with pest and pigeon populations.





# Helping every kind of business with their workplace needs

At PHS we believe most of what we do should go unnoticed, because, if our customers don't have to think about what we do, our job is done.

Businesses need people they can rely on. People they trust to deliver on their promises. Over and over again.

That's why at PHS we've made reliability central to everything we do.

We have a team of over 5,000 people in 140 sites in the UK who are specifically trained to help every kind of business with their workplace needs.

With over 200,000 business customers at over 450,000 locations we combine the strength and security of a large organization with the reassurance of a fast friendly service.

## Washroom Services

---

## Workplace Services

Crate Services  
Plants and Landscaping  
Water Dispensers  
Workplace Supplies

---

## Data Management Solutions

Scanning  
Storage  
Shredding

---

## Laundry Equipment and Textile Solutions

Workwear and Laundry Solutions  
Laundry Equipment  
Matting and Floorcare  
Specialist Cleaning

---

## Technical Safety Services

---

## Waste Solutions



### Get in Touch

Block B, Western Industrial Estate,  
Caerphilly CF83 1XH

T: **029 2080 9090**  
E: **productinfo@phs.co.uk**  
W: **www.phs.co.uk**

PHS Group a company registered in England & Wales. Company Registration No. 05384799

