



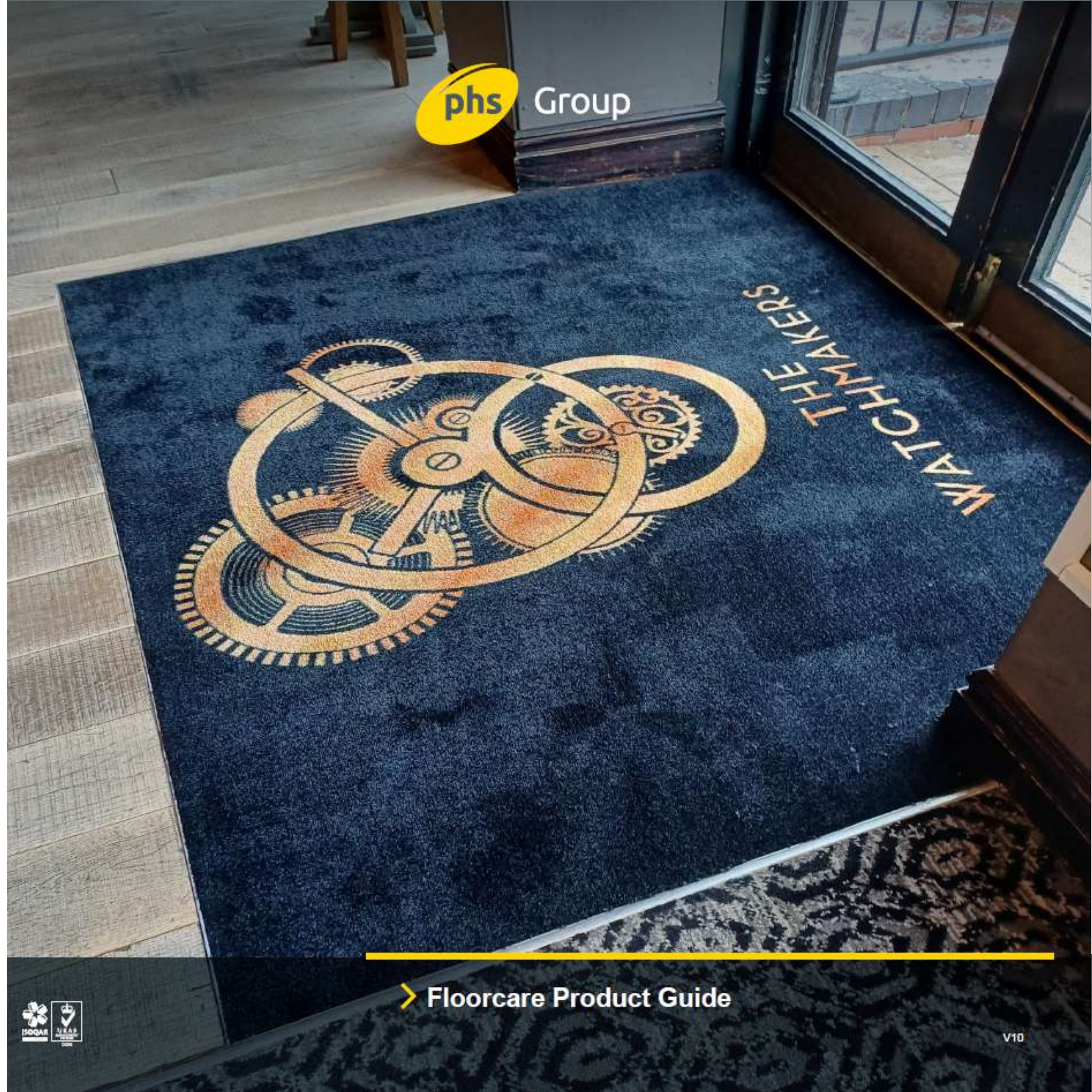
By Appointment to
His Majesty King Charles III
Suppliers of Mats and Matting Services
phs Group, Caerphilly



phs Group, Block B, Western Industrial Estate
Caerphilly CF83 1XH

029 2080 9090 | productinfo@phs.co.uk | phsgroup.co.uk

phs Group a company registered in England & Wales. Company Registration No. 05384799



> Floorcare Product Guide



Contents

What is ECONYL®?	05	Slip Safety Service	31
About ECONYL®	06	Contamination mats	32
Why mats?	07	Wet area matting	33
Benefits of serviced matting Floorcare	08	Fitted mats – introduction	34
Map of Mats	09	Lift car mats – logo / image	35
Lead Times	11	Ultra Plus fitted mats	36
Loose Lay Mats	12	Planet Range fitted mats	37
Eco Standard Mats	13	Logo / image fitted mats	38
Ultra Plus Mats	14	Printed plain colour fitted mats	39
Planet Range	15	Permanent fitted matting solutions	40
Printed Plain Mats	16	Forma HD – plain & logo	41
Logo / Image Mats	17	Quadra HD – plain & logo	42
Rubber Logo Mats	18	Tergo HD	43
Outdoor Premium Logo Mats	19	Foris – fitted	44
Tuff Canopy Mats	20	Smart Step	45
Sink Mats	22	Megahold	46
Hand Dryer Mats	23	Entrance Matting Cleaning	47
Urinal Floor Mats	24	Work Matta Range	48-49
Workplace office mats	25		
Shaped mats	26		
PPE message mats	27		
Comfort anti-fatigue mats	28		
Ultraflow anti-fatigue mats	29		
Premium anti-fatigue indoor mats	30		



By Appointment to
His Majesty King Charles III
Suppliers of Mats and Matting Services
phs Group, Caerphilly

What is ECONYL®?



Ghost nets are abandoned fishing nets which drift to the bottom of oceans tangling over reefs and ensnaring marine life such as whales, dolphins turtles and seals every year, leading to their eventual deaths.

Each year it is estimated that over 640,000 tonnes of nets are abandoned in the oceans of the world. A nylon fishing net will take approx. 600 years to decompose, and during that time will break down into micro-fibres, entering the food chain, causing us unknown future health consequences.

phs source mats from a sustainable partner called M&A, who work with other environmental companies, such as Aquafil, to remove this netting from our oceans.

All plain mats are now made from 100% ECONYL® regenerated nylon reclaimed from our oceans, not only saving our marine life but protecting our planet for future generations.

All our Logo & Image Mats are made from rPET which is produced from recycle plastic bottles.



DID YOU KNOW?

640,000 tonnes of fishing nets are abandoned in our oceans each year, trapping and killing wildlife and damaging reefs

> Check out our ECONYL® video on YouTube:
https://youtube/xzpyt2nSF_c

ECONYL® The 6 steps

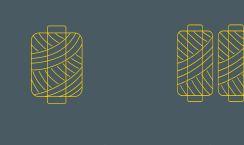
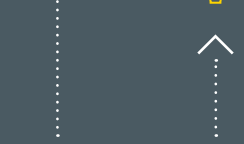
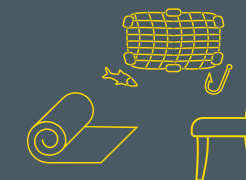
6. Re-commercialization



1. World-wide PA6 waste rescue



2. Storage and preparation of pre and post consumer waste



Business unit

5. Transformation of PA6 polymers



4. Polymerization



Ljubljana



Ajdovscina, Slovenia (EU)



Ajdovscina, Slovenia (EU)

3. ECONYL® depolymerization plant



About ECONYL®

Some see trash. Others see treasure.

Nylon waste, otherwise polluting the Earth, is transformed into ECONYL® regenerated nylon. It's exactly the same as brand new nylon and can be recycled, recreated and remoulded again and again.

That means you can create new products and buy new products without having to use new resources.

ECONYL® regenerated nylon is a product that can help you close the loop. Made from waste, it's infinitely recyclable and can unleash infinite possibilities for makers, creators and consumers. It's all part of the ECONYL® brand vision to make the world a better place by pioneering closed loop regeneration processes and delivering sustainable products.

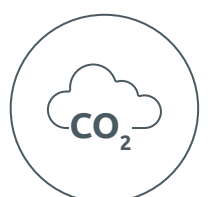
As well as being a solution on waste, ECONYL® regenerated nylon is also better when it comes to climate change.

It reduces the global warming impact of nylon by up to 90% compared with the material from oil.

For every 10,000 tons of ECONYL® raw material, we are able to:



Save **70,000** barrels of crude oil



Avoid **65,100** tonnes of CO2 eq. emissions

Why mats?

51% of plaintiffs win liability claims for slips and falls

Source: Jury Verdict Research

41%

of workplace injuries are caused by...
slips, trips and falls

Source: International Workplace

90% of slips occur when the floor is wet

Source: HSE

70–80%

of the dirt entering your building is from
the soles of people's shoes

Source: Dept. of Environment

Slips, trips and falls are the most common injury to employees

Source: HSE

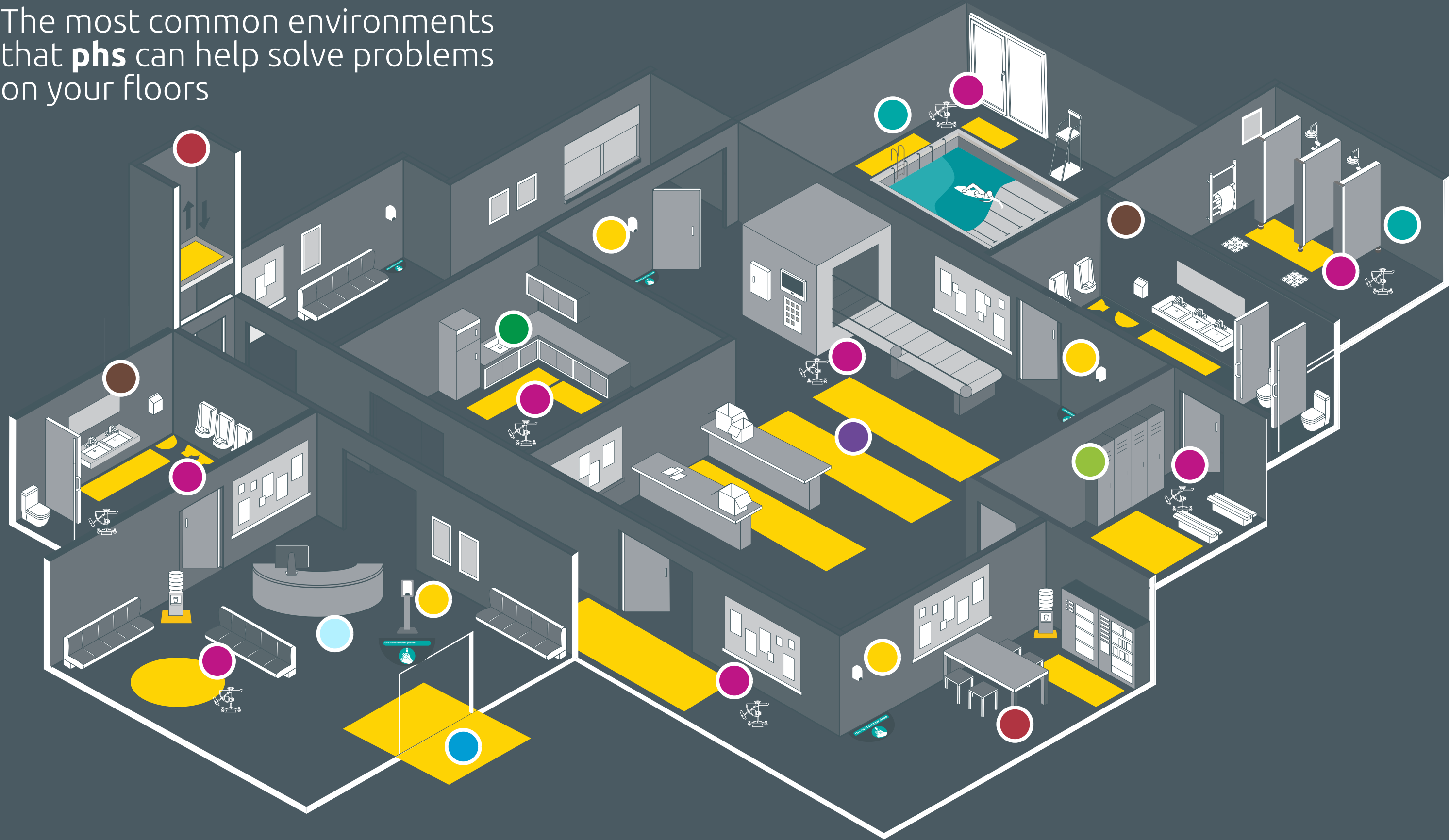
40% of any cleaning budget is used to clean the floors

Source: Carpet and Floor Covering Review

Benefits of serviced matting

- **Image** and brand awareness.
- **Reducing** cleaning time and cost on site.
- **Protecting** floors from premature damage.
- **Preventing** slips and trips – legal requirement.
- **Being** better than your rival across the street!
- **Cleaner** floors – improves image.
- **Drier** floors – prevent slips.
- **Health** and safety compliant.
- **Storing** foot-borne dirt and removing from premises.

The most common environments that **phs** can help solve problems on your floors



- | | | | | |
|--|--|--|---|--|
|  Outdoors |  Corridors, Lifts & Vending |  Changing Rooms |  Commercial Kitchens |  Slip Testing |
|  Reception Area |  Washrooms |  Wet Area Matting |  Manufacturing Area |  Sanitisers |

Floorcare availability and lead times

Eco standard mats

120x85, 150x85, 180x115, 350x115



Up to 10 days | Qty Over 25 | 5 weeks mobilisation call

Tuff. Ultra Plus, Comfort. Ultraflow



Up to 10 days | Qty Over 25 | 5 weeks mobilisation call

Hand dryer mats



Up to 10 days | Qty Over 25 | 5 weeks mobilisation call

Logo, Image & Plain Coloured Mats



Lead time: 4 weeks

Wet area matting



Lead time: 3-4 weeks

Bespoke Mats - Planet etc



Lead time: 5-6 weeks

Outdoor mats



Lead time: 6 weeks

Permanent Fitted Mats

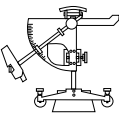


Lead time: 5-6 weeks

Fitted logo, Plain , Ultra Plus



Lead time: 5-6 weeks



Slip test Pendulum
Lead time: 3-4 weeks

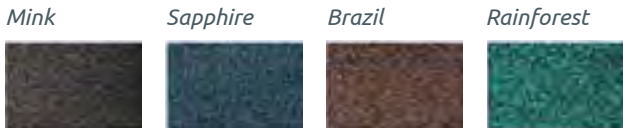
Loose-lay Lift and Lay matting solutions



Eco standard mats



- Key features**
- Standard service is 26 p.a. (fortnightly)
 - Monthly (13p.a.) & weekly (52p.a.) available
 - Backing = 100% nitrile rubber
 - Total thickness = 9mm
 - Fire resistance = Cfl s1
 - 18mm anti trip rubber border all around
 - Antistatic = <2kV
 - Yarn = 100% ECONYL®
 - BS8300 / DDA / ADA compliant
 - Indoor use only



Available options

Colour options:				Mink	Brazil	Sapphire	Rainforest	Sapphire	Rainforest
				Gripper	Gripper	Gripper	Gripper	Smooth	Smooth
120cm x 85cm	1.02m²	4 x 3		003026	003025	002794	003480	007321	003485
150cm x 85cm	1.27m²	5 x 3		001638	002278	002273	003481	007322	003486
180cm x 115cm	2.07m²	6 x 4		001641	002279	002274	003482	007323	003487
240cm x 85cm*	2.04m²	8 x 3		002064	002280	002275	003483	008501	003488
240cm x 115cm*	2.76m²	8 x 4		003046	003072	002803	17022800	N/A	N/A
350cm x 115cm	4.02m²	12 x 4		002277	002281	002276	003484	07324	003489

LIFT & LAY
SERVICE

BS8300
COMPLIANT

Ultra plus mats



- Key features**
- Standard service is 26 p.a. (fortnightly)
 - Monthly (13p.a.) & weekly (52p.a.) available
 - Backing = 100% nitrile rubber
 - Total thickness = 10-11mm
 - Fire resistance = Dfl-s1
 - 20mm anti-trip rubber border all around
 - Antistatic = <2kV
 - Yarn = 100% ECONYL®
 - BS8300 / DDA / ADA compliant
 - Colours: graphite only
 - Gripper or smooth backed choice
 - 32% more soil/moisture capture than standards
 - Ideal sink mat for use in washrooms
 - Heavy duty micromix pile 66%/33%
 - Indoor use only

Product Specification

Sizes	120x85cm, 150x85cm, 180x115cm, 240x85cm, 350x115cm
Thickness	10mm
Colour	Graphite Grey

BS8300
COMPLIANT

LIFT & LAY
SERVICE

Available options

Also available in a fitted lift and lay mat option.

Backing options:			Gripper or smooth	
Bespoke Ultra Plus Loose-Lay – 120cm x 85cm	1.02m²	4 x 3	17036148	
Bespoke Ultra Plus Loose-Lay – 150cm x 85cm	1.27m²	5 x 3	17036150	
Bespoke Ultra Plus Loose-Lay – 180cm x 115cm	2.07m²	6 x 4	17036161	
Bespoke Ultra Plus Loose-Lay – 240cm x 115cm	2.76m²	8 x 4	17036173	
Bespoke Ultra Plus Loose-Lay – 240cm x 150cm	3.60m²	8 x 5	17036185	
Bespoke Ultra Plus Loose-Lay – 350cm x 115cm	4.02m²	12 x	17036197	
Standard Ultra Plus Loose-Lay – 85cm x 60cm	0.51m²	4 x 2	17023397	
Standard Ultra Plus Loose-Lay – 120cm x 85cm	1.02m²	4 x 3	17022848	
Standard Ultra Plus Loose-Lay – 150cm x 85cm	1.27m²	5 x 3	17022850	
Standard Ultra Plus Loose-Lay – 180cm x 115cm	2.07m²	6 x 4	17022861	
Standard Ultra Plus Loose-Lay – 240cm x 85cm	2.04m²	8 x 3	17022873	
Standard Ultra Plus Loose-Lay – 350cm x 115cm	4.02m²	12 x	17022885	

NEW

200 x 200cm Ultra Plus 4 sqm 17039307

Maximum width is 150cm you can go any size in the opposite direction as long as you are within 3.9sqm. Also available fitted in any matwell upto 3.9sqm

32% more absorbent than
a standard mat

Planet Range

Mottled / Flecked Mats
for extra durability



Our planet range of mats offer limitless design opportunities. From creating a complete brand experience, to providing additional health and safety signage.

Key Features:

- New pattern developed to compliment dark grey, blue, brown and red in our forma and foris colour range
- Can be used as a patterned mat or logo mat
- Please note that the planet range of fleck patterned colours are not an exact match to our Forma and Foris range of colours due to the different textile used in the product
- Available in any bespoke size up to 4.2sqm (loose-lay) and up to 3.9sqm (fitted)



Please Note: 10cm is added to the size of each mat in both directions as standard procedure by the logo's team to give the fitter the material required to cut.

Maximum width or length is 185cm you can go any size in the opposite direction as long as you are within 3.9sqm.

Also available in a fitted lift and lay mat option.

Options:		
Planet Range – Loose Lay – 120 x 85		17035168
Planet Range – Loose Lay – 150 x 85		17035170
Planet Range – Loose Lay – 180 x 115		17035181
Planet Range – Loose Lay – 240 x 115		17035193
Planet Range – Loose Lay – 240 x 150		17035200
Planet Range – Loose Lay – 350 x 115		17035211
Planet Range Logo – Loose Lay – 120 x 85		17035223
Planet Range Logo – Loose Lay – 150 x 85		17035235
Planet Range Logo – Loose Lay – 180 x 115		17035247
Planet Range Logo – Loose Lay – 240 x 115		17035259
Planet Range Logo – Loose Lay – 240 x 150		17035260
Planet Range Logo – Loose Lay – 350 x 115		17035272

Also available fitted in any matwell upto 3.9sqm



Printed plain colour mats

Same price as logo mats



Key features

- Standard service is 26 p.a. (fortnightly)
- Monthly (13p.a) & weekly (52p.a.) available
- Backing = 100% nitrile rubber
- Total thickness = 9mm
- Fire resistance = Cfl s1
- 18mm anti trip rubber border all around
- Bespoke mats i.e. dedicated stock
- Antistatic = <2kV
- BS8300 / DDA / ADA compliant
- Gripper or smooth backed
- DMS backing for heavy weight smooth backing
- 100 colour choices
- Bespoke sizes are available up to mac. 4.02sqm
- HD344 can not be used
- Indoor use only
- **Light colour backgrounds should not be used!**



Available options

Backing options:		Gripper or smooth		DMS backed smooth only
120cm x 85cm	1.02m²	4 x 3	107950	17020177
150cm x 85cm	1.27m²	5 x 3	107951	17020189
180cm x 115cm	2.07m²	6 x 4	107952	17020190
240cm x 115cm	2.76m²	8 x 4	107953	17020707
240cm x 150cm	3.60m²	8 x 5	107954	17020219
350cm x 115cm	4.02m²	12 x 4	107955	N/A



Logo / Image mats



Key features

- Standard service is 26 p.a. (fortnightly)
- Monthly (13p.a.) & weekly (52p.a.) available
- Backing = 100% nitrile rubber
- Total thickness = 9mm
- Fire resistance = Cfl-s1
- 18mm anti-trip rubber border all around
- Bespoke mats i.e. dedicated stock
- Antistatic = <2kV
- BS8300 / DDA / ADA compliant
- Gripper or smooth backed
- DMS backing for heavy weight smooth backing
- 100 colour choices
- Bespoke sizes are available up to max. 4.02sqm
- Use dark practical background colours
- Indoor use only



Available options

Backing options:		Gripper or smooth		DMS
120cm x 85cm	1.02m ²	4 x 3	006807	17020116
150cm x 85cm	1.27m ²	5 x 3	006808	17020128
180cm x 115cm	2.07m ²	6 x 4	006809	17020130
240cm x 115cm	2.76m ²	8 x 4	006810	17020141
240cm x 150cm	3.60m ²	8 x 5	007473	17020153
350cm x 115cm	4.02m ²	12 x 4	006811	N/A

- Avoid using light colours for backgrounds as mats are placed on the floor and therefore need to be practical

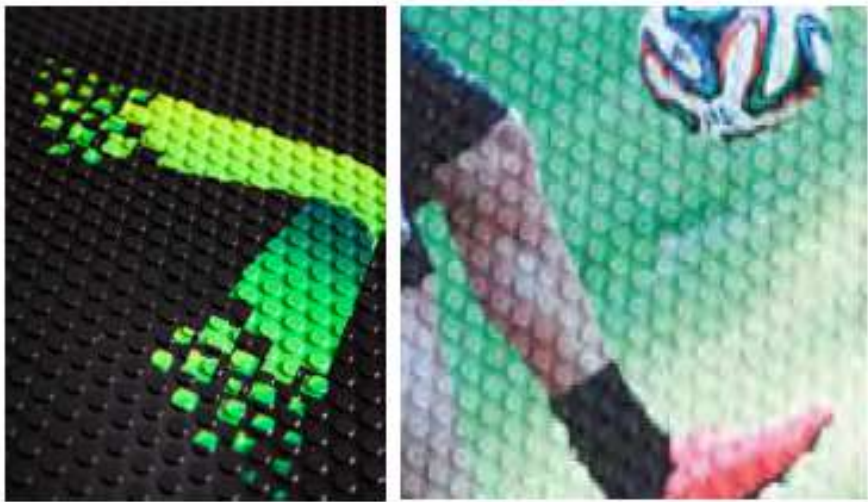


Indoor rubber logo mat



Rubber Logo Mats feature your custom logo or artwork overlaid onto a comfort mat.

Multicolor images are created by molding a digitally printed polymetric material into the durable nitrile rubber surface of the mat.



RUBBER

100% Nitrile EXS™
thickness 2,9mm

TOTAL WEIGHT
5,20 kg/m²

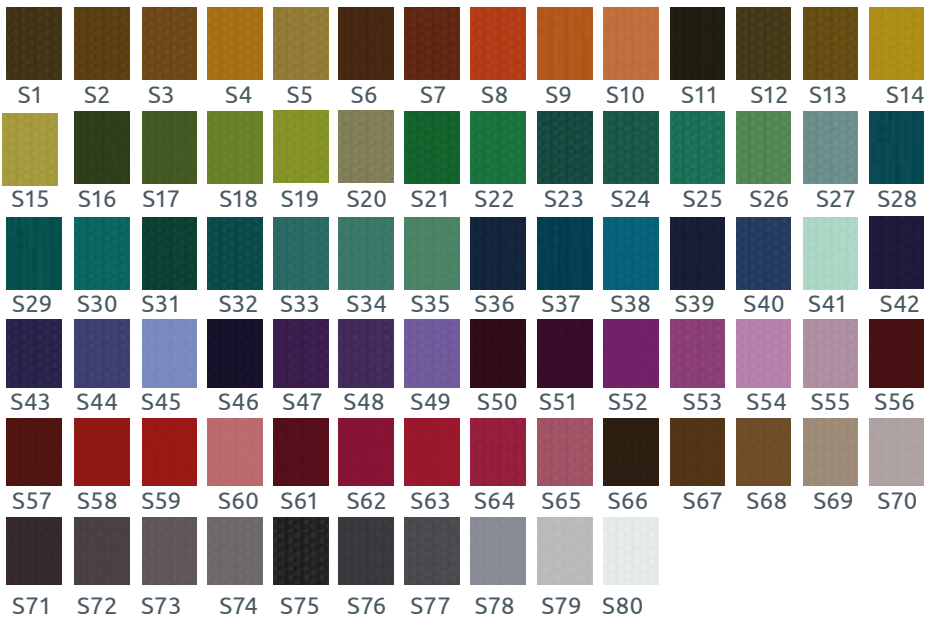
THICKNESS
3mm

13pa or 26pa

Available options

Mat size	Max logo size	Code
75x85cms	55x65	17034851
85x150cms	65x130	17034863
115x180cms	95x160	17034875

Size Tolerance: +/- 5%



Excellent Indoor PPE Mats

Outdoor premium logo mat



Outdoor premium logo mats feature your custom logo or artwork on durable nylon monofibers.



Durable Nylon Brush monofibers make for excellent scraping action.



Drainage holes allow for excellent drainage.



50 Colours to choose from. Plain mats also available.



True outdoor mat no shelter required.



A1	B1	C1	D1	E1
A2	B2	C2	D2	E2
A3	B3	C3	D3	E3
A4	B4	C4	D4	E4
A5	B5	C5	D5	E5
A6	B6	C6	D6	E6
A7	B7	C7	D7	E7
A8	B8	C8	D8	E8
A9	B9	C9	D9	E9
A10	B10	C10	D10	E10

Available options:

Premium Plain Mat

Mat size	Code
75x85cms	17034899
85x115cms	17034905
85x150cms	17034693
115x180cms	17034711
115x200cms	17034723

Size Tolerance: +/- 2%

Frequency 26pa & 13pa

Premium Logo Mat

Mat size	Code
75x85cms	17034760
85x115cms	17034772
85x150cms	17034784
115x180cms	17034802
115x200cms	17034814



Gripper backing with drainage holes

Outdoor - Tuff mats – canopy

Must be under a canopy



TUFF MAT in situ, must be used under a canopy if being used externally

Key features

- Standard service is 26 p.a. (fortnightly)
- Monthly (13p.a.) & weekly (52p.a.) available
- Backing = 100% nitrile rubber
- Total thickness = 10mm
- Fire resistance = Dfl-s1
- 21mm anti-trip rubber border all around
- Yarn = 100% ECONYL®
- BS8300 / DDA / ADA compliant
- Bespoke mats i.e. dedicated stock
- External use under a canopy only
- Do not place in direct rainfall



Tuff Mat texture sample – grey only

Available options

Colour options:		Grey	
150cm x 85cm	1.27m ²	5 x 3	003963
200cm x 115cm	2.3m ²	7 x 4	003964
300cm x 85cm	2.55m ²	10 x 3	006925



90%



90% of all slips occur when the floor is wet

Washroom mats

Sink Mats

> A hygienic solution to keeping your washroom floors dry and protected against slips & falls from wet floors.



Sink Mats are the ideal solution to protect against slips in Washroom environment as 90% of slips occur when the floor is wet. After washing, your wet hands can lead to drips that create puddles and potential accidents in the Washroom.

Our unique Sink Mats are made from a highly absorbent micromix textile which absorbs moisture quickly & effectively.

Combined with our matching Hand Dryer Mats, Roller Towel Mats and Slip Safety Safety Tests your Washroom has never been a safer environment.

Size options:	Graphite colour only
Sink Mat - 120 x 85cm	17037311
Sink Mat - 150 x 85cm	17037323
Sink Mat - 180 x 115cm	17037335
Sink Mat - 240 x 85cm	17037347

Key Features :

- Address the slip hazard of wet floors in washrooms
- Captures the water from dripping hands

Key Benefits :

- Minimises the slip hazard in washrooms between cleans
- Enhances the look & safety of your Washroom
- Laundering service ensures mats are properly cleaned & dried on a regular basis keeping them hygienic



PHS Hand Dryer Mats

Prevent Slip & Improve Hygiene

Water often accumulates beneath Hand Dryers creating potential slip hazards

Our specially designed Hand Dryer Mats help reduce the risk while enhancing washroom hygiene

Crafted with ultra-fine solution dyed fibres, these mats absorb 35% more moisture than standard nylon mats

Key Features :

Helps address the slip hazard of wet floors beneath hand dryers in washrooms

Captures the water blown off hands by the new generation of high speed hand dryers

Key Benefits :

Minimises the slip hazard in washrooms between cleans

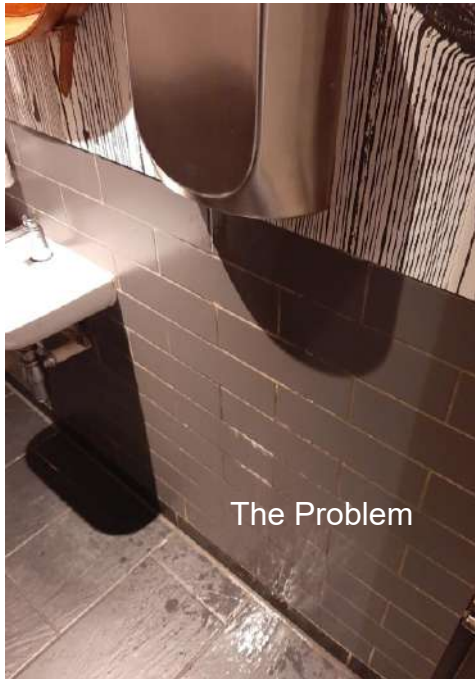
Recommended when using the new generation of high speed hand dryers

Laundrying service ensures mats are properly cleaned & dried on a regular basis

Product Specification			
Sizes	Large 85 x 42cm & Small 60 x 30cm		
Thickness	9mm		
Colours	Graphite Grey		

Size options:		Graphite colour only	
Small	60cm x 30cm	Semi-circular	17026763
Large	85cm x 42cm	Semi-circular	17022812

 **90%** of all slips occur when the floor is wet.



The Problem



The Solution

 **LIFT & LAY SERVICE**

 **BS8300 COMPLIANT**

PHS Urinal Floor Mats

 **90%** of all slips occur when the floor is wet.

A hygienic solution to keeping your washroom floors dry and protected against slips & falls from wet floors.



The Problem



Urine spills beneath urinals are a longstanding issue in men's washrooms, often resulting in contamination being tracked onto carpeted areas outside. Frequent mopping increases cleaning costs and can spread the urine further, allowing it to settle into porous grout and corners, which intensifies odours.

PHS Urinal Floor Mats offer an effective solution. Their highly absorbent design captures spills at the source, while a silver ion-based antimicrobial treatment helps neutralise odours. Regular servicing by PHS ensures ongoing hygiene and convenience, reducing maintenance burdens.



The Solution



Product Code 17041016

Workplace office mats



Rectangular mats available in smooth or gripper back.
Semi-circular mats available in smooth back only for hard surface only.

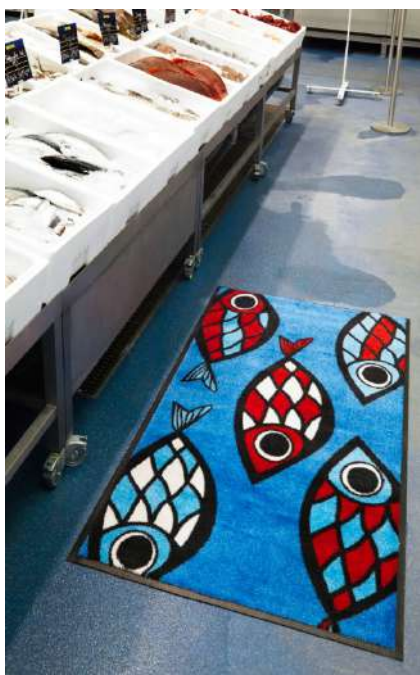


Key features

- Standard service is 26 p.a. (fortnightly)
- Monthly (13p.a) & weekly (52p.a.) available
- Backing = 100% nitrile rubber
- Total thickness = 9mm
- Fire resistance = Cfl s1
- 18mm anti trip rubber border all around
- Bespoke mats i.e. dedicated stock
- Antistatic = <2kV
- BS8300 / DDA / ADA compliant
- Rectangles = gripper or smooth backed
- Semi circular = smooth backed only
- Indoor use only

LIFT & LAY SERVICE

BS8300 COMPLIANT



Available options

Backing options:	Shape	Smooth or gripper	Smooth backed only
Water cooler mat	120cm x 85cm	Square	17022824
Coffee Vend mat	120cm x 85cm	Square	17022836
Water cooler mat	42cm x 85cm	Semi	17023440
Coffee Vend mat	42cm x 85cm	Semi	17023452

Shaped mats



Help to remind people to follow instructions in your facility as well as protect floors from premature damage and slips with our new circular message mats.

Key features:

- Eye catching suits circular logo designs
- Semi Oval / Oval / Circular & Semi-Circular
- Bespoke messaging available
- Beneficial to your facility for highlighting necessary measures in place
- Easy to move to different locations around your facility
- Caution Wet Floor Design - better than cones

Available options

Backing options:		
Semi Oval – Loose Lay – 85cm x 150cm		17036290
Semi Oval – Loose Lay – 115cm x 200cm		17036306
Semi Oval – Loose Lay – 150cm x 250cm		17036318
Oval – Loose Lay – 85cm x 150cm		17036320
Oval – Loose Lay – 115cm x 200cm		17036331
Oval – Loose Lay – 150cm x 250cm		17036343
Circular – Loose Lay – 85cm x 85cm		17036355
Circular – Loose Lay – 115cm x 115cm		17036367
Semi-Circular – Loose Lay – 115cm x 57cm		17036379
Semi-Circular – Loose Lay – 150cm x 75cm		17036380
Semi-Circular – Loose Lay – 200cm x 100cm		17036392
Circular Logo Loose-Lay – 150cm x 150cm		16414317
Circular Logo Loose-Lay – 200cm x 200cm		16414329



BS8300 COMPLIANT



LIFT & LAY SERVICE



PPE message mats



Key features

- Standard service is 26 p.a. (fortnightly)
- Monthly (13p.a.) & weekly (52p.a.) available
- Backing = 100% nitrile rubber
- Total thickness = 9mm
- Fire resistance = Cfl s1
- 18mm anti trip rubber border all around
- Bespoke mats i.e. dedicated stock
- Antistatic = <2kV
- BS8300 / DDA / ADA compliant
- Gripper or smooth backed
- 12 standard design choices
- Other designs available
- Indoor use only

Available options

Portrait		Smooth or gripper	
150 x 85	1.27m ²	5 x 3	17026258



Comfort anti-fatigue mats



Comfort and Ultraflow anti-fatigue mats are really useful in engineering environments where swarf is a problem.

Tip: think of all the locations where staff are required to stand for long periods, there could be many.



Key features

- Standard service is 13 p.a. (monthly)
- Fortnightly (26 p.a.) available
- Nitrile foamed rubber
- Total thickness = 8mm
- Fire rating = UL94 HBF
- Reduces leg fatigue and noise
- Antistatic properties
- APMA approved
- Helps address work related illness and injuries
- Impervious to chemical & oil based products
- Colour = Black
- Closed construction
- Internal use only

Available options

Backing options:		Foamed rubber	
84cm x 60cm	0.50m ²	3 x 2	003961
140cm x 84cm	1.17m ²	5 x 3	003962
180cm x 120cm	2.16m ²	6 x 4	005829
300cm x 85cm	2.70m ²	8 x 4	005831



Employees standing up all day in areas like check-out stations, service counters, and assembly lines or behind bars need physical support to keep motivation and energy. The Comfort anti-fatigue mat concept is specially designed for safety, comfort and protection.

- Made from premium quality nitrile rubber, comfort mats are water resistant and resilient to impact.
- Can be transformational for employees who have to stand for long periods reducing leg fatigue and noise.

Comfort mats can be more competitively priced by offering at lower service intervals (i.e. 13p.a.).



Ultraflow anti-fatigue mats



Tip: think of all the locations where staff work in wet conditions. Good for use externally in direct rainfall areas

i.e. schools as a scraper mat.

Key features

- Standard service is 13 p.a. (monthly)
- Fortnightly (26 p.a.) available
- Total thickness = 8mm
- Fire rating = UL94 HBF
- Reduces leg fatigue & lower back pain
- Antistatic properties
- Excellent slip resistance in wet areas
- Helps address slips and trips at work
- Impervious to chemical & oil based products
- Anti microbial properties
- Colour = Black
- Open construction for drainage



Providing extra support for employees standing on their feet for prolonged periods, Ultraflow mats are a comfort mat especially designed for wet areas such as bars and kitchens.

- Designed for use in wet areas as the surface texture prevents slips, the holes allow water to escape and the studed pattern on the bottom directs drainage.
- Can be transformational for employees who have to stand for long periods, as it reduces leg fatigue, along with noise.

Ultraflow mats can be more competitively priced by offering at lower service intervals (i.e. 13p.a.)

Two Sizes Only

86cm x 54cm	0.46m ²	3 x 2	17039277
86cm x 142cm	1.14m ²	3 x 4½	106379



Premium anti-fatigue indoor mats



Premium anti fatigue mats are anti-microbial, mats that can be autoclave sterilised and commercially laundered.

Key features

- Ergonomically superior anti-fatigue mat.
- Textured surface offers superior slip and skid resistance.
- Bevelled edges create a smooth floor-to-mat transition, reducing slip and falls.
- 100% Nitrile Rubber
- Anti-microbial treatment reduces odours by inhibiting the growth of germs and bacteria.
- Lightweight and easy to clean.

Available options

Specifications

Premium Anti Fatigue mat loose lay

Standard sizes (cm)	60x90*	90x150*
Thickness	13 mm	
Type	Closed cell Nitrile Sponge Rubber	
Code	17036252	17036264

Size Tolerance: +/- 5%
*In stock



Slip and skid resistance



Bevelled edges



Thickness 13 mm



Slip Safety Service

Reduce the risk of slip accidents

Do you have a current certificate to defend your business in case of a slip accident on your site?

Pendulum Slip testing is the standard test method used by HSE to assess wet and dry floor slipperiness. Caution Wet Floor signs do not mitigate liability on floors that are unsafe they just highlight the issue that needs addressing.

phs can undertake this testing in your premises. Providing you with a detailed analysis with recommendations for improvements.
Ensuring your premises are safe and compliant.

- Slips are the most common cause of accident, injury & claims.
- An average claim is £10k but the true cost of an accident is £100k+
- Insurance premiums are rising all the time and given that slips are 33% of claims, managing that risk has never been more important
- If you are able to provide evidence of compliant results, not only will you see fewer accidents, but it will help to defend claims

We conduct testing for insurers, lawyers, floor suppliers, FM companies and, of course, many businesses. Our testing includes a detailed, court-ready report, including test Chimes results, findings and recommendations.

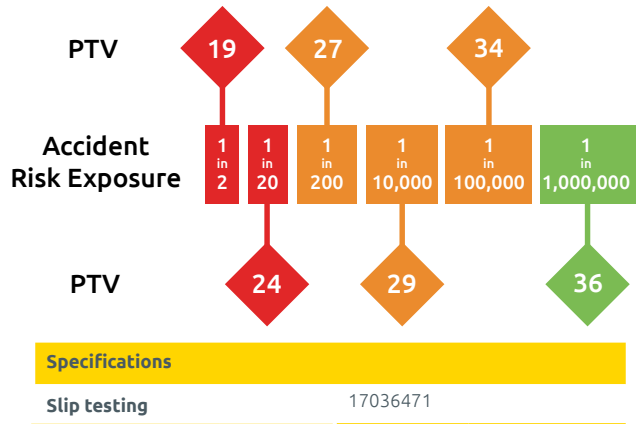


Excluding Northern Ireland



Slip test Pendulum
Lead time: 3-4 weeks

ON-SITE
SERVICE



Contamination mat

Introducing the contamination mat, an effective way to sanitise footwear and wheeled equipment as they enter a room or building. Welfare Essentials for a feel good workplace



Contamination Mats

A heavy duty brush fibre mat with sanitising liquid to scrub and disinfect the soles of footwear. Contamination mats can be used to create a barrier to prevent viruses being spread through buildings.

Special Service

This mat is available from **p**hs on a 13 pa service.

Mats are provided in a set of 3 mats -

- one on-site on the ground
- one on-site in the cleaner's cupboard
- one in the phs laundry

Every service visit we will change the mat in the cleaner's cupboard only for a freshly laundered mat.

The mat on the floor is there for the customer to prime with the correct sanitising fluids required for their operational needs on daily basis.

Specifications

Contamination Mats	17037300	150 x 85cm
--------------------	----------	------------



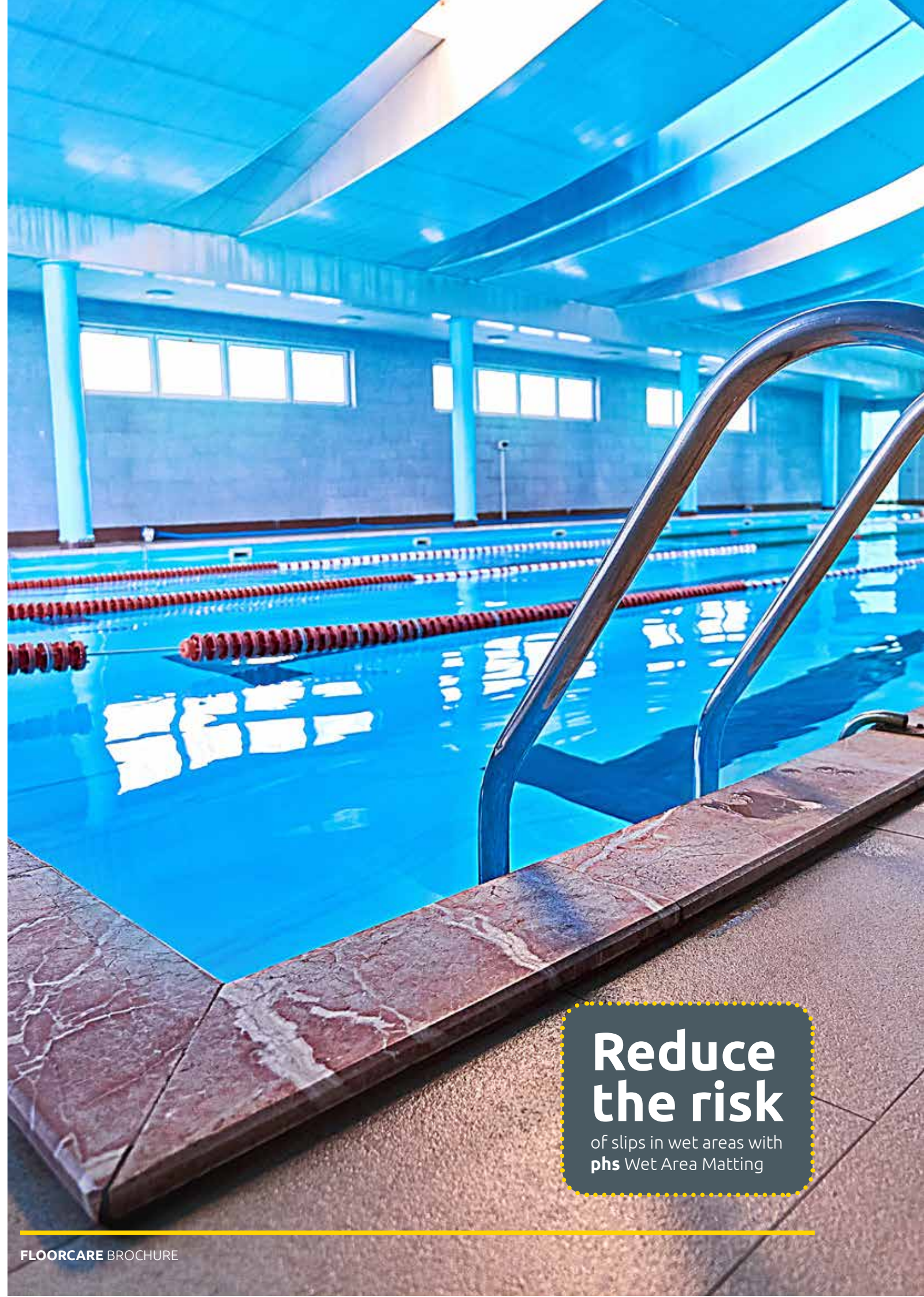
Key features

- Spill Control borders allow for containment of up to 4.1 ltrs of disinfecting liquid per m²
- Mono Filament Brush fibres scrub soles clean to remove dirt
- Resistant to most chemicals such as bleach and other disinfectant solutions
- Nitrile rubber backing offers excellent slip resistance

Key benefits

- Reduce the risk of contamination in your premises by preventing the spread of bacteria
- Mat can be filled with a disinfection solution to meets your specific needs
- Brush fibre surface cleans soles of footwear to stop the spread of dirt





**Reduce
the risk**
of slips in wet areas with
phs Wet Area Matting

Wet area matting

Not for use in the shower cubicle!

Durable Wet Area Matting for indoor and outdoor use.



Leisure areas including locker rooms, showers, pools, and spas.

Must be outside shower and not inside shower tray.



Key features

- Slip resistant for increased safety in wet area
- Comfortable for users to walk on
- Hygienically treated with anti-microbial treatment
- Made from durable closed-cell nitrile rubber that is UV resistant
- Available on a lift and lay cleaning service



Safety standards

- Certified high-traction by the National Floor Safety Institute (NFSI)
- Passes flammability standard CPSC-FF1-70
- ASTM C1028-96 Static Coefficient of Friction: Dry 0.99 Wet 0.82

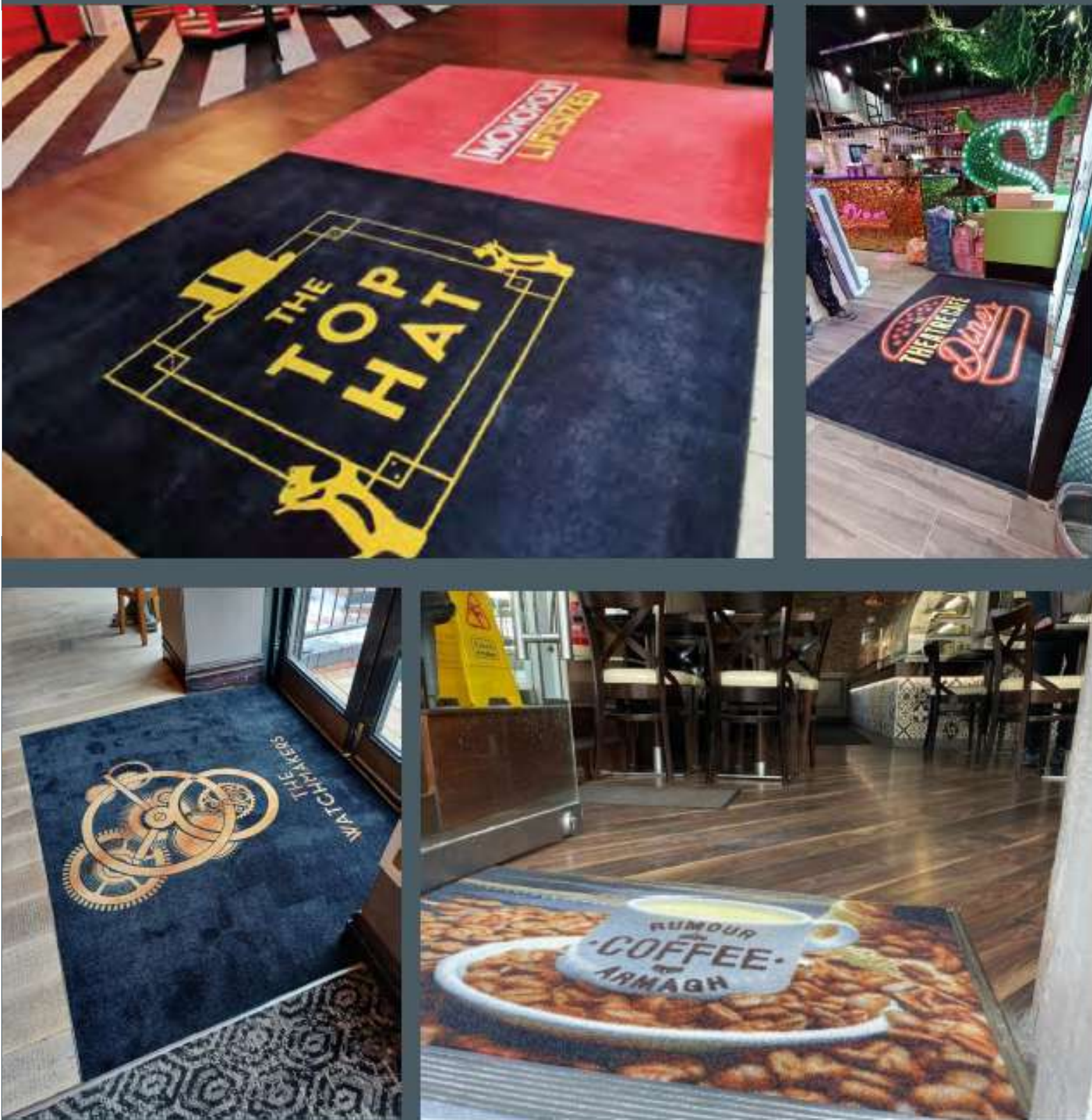


Material: High-density, closed-cell nitrile rubber foam
Thickness: 6.35mm

Available options

Colour	Size	Product Code
Blue	60cm x 90cm	17036513
	90cm x 150cm	17036525
	90cm x 300cm	17036537
Grey	60cm x 90cm	17036549
	90cm x 150cm	17036550
	90cm x 300cm	17036562

Fitted Lift and Lay matting solutions



Lift car mats – logo / image



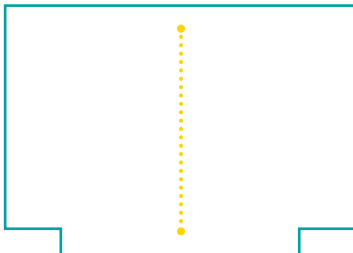
- Key features**
- Standard service is 26 p.a. (fortnightly)
 - Monthly (13p.a) & weekly (52p.a.) available
 - Backing = 100% nitrile rubber DMS
 - Total thickness = 10-11mm
 - Fire resistance = Cfl s1
 - Bespoke mats i.e. dedicated stock
 - Antistatic = <2kV
 - BS8300 / DDA / ADA compliant
 - 150 colour choices which can be made into 5 million variations through shading
 - Bespoke sizes are available
 - HD344 can not be used as a background colour
 - Try to use dark practical background colours
 - Jpeg hi resolution images are best for image mats
 - Internal Use only

TWISTING & TURNING...

Footfall in lift cars is more intense due to the twisting action in such a confined space

Options:	
Measures up to 1.275m²	17022897
Measures up to 2.16m²	17022903
Measures up to 2.88m²	17022915
Measures up to 3.6m²	17022927
Measures up to 3.96m²	17022939

- Avoid using light colours for backgrounds as mats are placed on the floor and therefore need to be practical



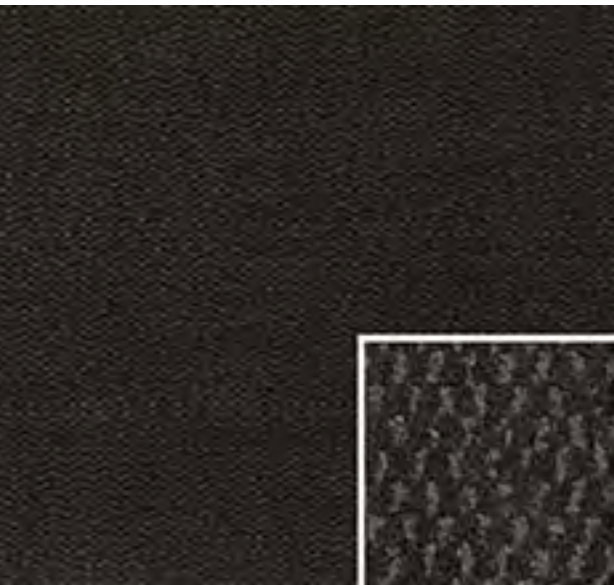
In the majority of cases Lift Car mats are rectangles and can be measured as indicated.

We always try to avoid right angle cuts in Lift Cars as these can lead to tears in the wash process.

- Avoid using light colours for backgrounds as mats are placed on the floor and therefore need to be practical



Ultra plus fitted mats



Also available in a fitted lift and lay mat option.

Key features

- Standard service is 26 p.a. (fortnightly)
- Monthly (13p.a.) & weekly (52p.a.) available
- Backing = 100% nitrile rubber
- Total thickness = 10-11mm
- Fire resistance = Dfl-s1
- 20mm anti-trip rubber border all around
- Antistatic = <2kV
- Yarn = 100% ECONYL®
- BS8300 / DDA / ADA compliant
- Colours: graphite only
- Gripper or smooth backed choice
- 32% more soil/moisture capture than standards
- Ideal sink mat for use in washrooms
- Heavy duty micromix pile 66%/33%
- Indoor use only

Product Specification	
Sizes	120x85cm, 150x85cm, 180x115cm, 240x85cm, 350x115cm
Thickness	7-12mm
Colour	Graphite Grey

BS8300
COMPLIANT

LIFT & LAY
SERVICE

Available options

Backing options:	Gripper or smooth
Bespoke Ultra Plus – Fitted – Up to 1.275M	17036203
Bespoke Ultra Plus – Fitted – Up to 2.07M	17036215
Bespoke Ultra Plus – Fitted – Up to 2.76M	17036227
Bespoke Ultra Plus – Fitted – Up to 3.75M	17036239
Bespoke Ultra Plus – Fitted – Up to 3.9M	17036240

NB - Maximum width available is 140cm for fitting



Maximum width is 150cm you can go any size in the opposite direction as long as you are within 3.9sqm. Also available fitted in any matwell upto 3.9sqm

32% more absorbent than
a standard mat

Planet Range fitted mats



Our planet range of mats offer limitless design opportunities. From creating a complete brand experience, to providing additional health and safety signage.

Key features:

- New pattern developed to compliment dark grey, blue, brown and red in our forma and foris colour range
- Can be used as a patterned mat or logo mat
- Please note that the planet range of fleck patterned colours are not an exact match to our Forma and Foris range of colours due to the different textile used in the product
- Available in any bespoke size up to 4.2sqm (loose-lay) and up to 3.9sqm (fitted)

Options:	
Planet Range - Fitted - Up to 1.275M	17035284
Planet Range - Fitted - Up to 2.07M	17035296
Planet Range - Fitted - Up to 2.76M	17035302
Planet Range - Fitted - Up to 3.75M	17035314
Planet Range - Fitted - Up to 3.9M	17035326
Planet Range Logo Mat - Fitted - Up to 1.275M	17035338
Planet Range Logo Mat - Fitted - Up to 2.07M	17035340
Planet Range Logo Mat - Fitted - Up to 2.76M	17035351
Planet Range Logo Mat - Fitted - Up to 3.75M	17035363
Planet Range Logo Mat - Fitted - Up to 3.9M	17035375

Also available fitted in any matwell upto 3.9sqm



LIFT & LAY
SERVICE

BS8300
COMPLIANT

Logo / image fitted mats



Key features

- Standard service is 26 p.a. (fortnightly)
- Monthly (13p.a) & weekly (52p.a.) available
- Backing = 100% nitrile rubber DMS
- Total thickness = 10-11mm
- Fire resistance = Cfl s1
- Bespoke mats i.e. dedicated stock
- Antistatic = <2kV
- BS8300 / DDA / ADA compliant

- Avoid using light colours for backgrounds as mats are placed on the floor and therefore need to be practical

Options:

Measures up to 1.275m ²	006818
Measures up to 2.07m ²	006819
Measures up to 2.76m ²	006820
Measures up to 3.75m ²	007479
Measures up to 3.9m ²	006821

Note: Lead time is 5- 6 weeks

- 100 colour choices which can be made into
- Bespoke sizes are available up to max. 3.9m
- Try to use dark practical background colours
- Jpeg hi resolution images are best for image mats
- Internal use only



DID YOU KNOW?

On average an entrance mat absorbs so much material that it becomes ineffective after two weeks of use.

Printed plain colour fitted mats



- Avoid using light colours as mats are placed on the floor and therefore need to be practical

Key features

- Standard service is 26 p.a. (fortnightly)
- Monthly (13p.a) & weekly (52p.a.) available
- Backing = 100% nitrile rubber DMS
- Total thickness = 10-11mm
- Fire resistance = Cfl s1
- Bespoke mats i.e. dedicated stock
- Antistatic = <2kV
- BS8300 / DDA / ADA compliant

- 100 colour choices
- Bespoke sizes are available up to max. 3.9m
- Internal use only
- Do not use light colours as backgrounds!

Measure the matwell and select the size which will cover the area you want to install.



LIFT & LAY
SERVICE



BS8300
COMPLIANT



Options:

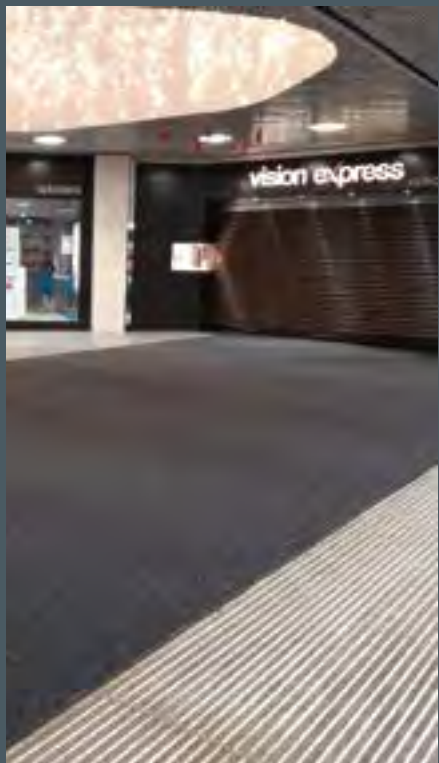
Measures up to 1.275m ²	107956
Measures up to 2.07m ²	107957
Measures up to 2.76m ²	107958
Measures up to 3.75m ²	107959
Measures up to 3.9m ²	107960

Maximum width or length is 185cm you can go any size in the opposite direction as long as you are within 3.9sqm

NB. Fitted mats can only be installed into an existing matwell or into carpeted areas. They can not be installed into a hard floor area.

Note: Lead time is 5- 6 weeks

Permanent fitted matting solutions



Forma HD – plain

Fitted Entrance Matting System



Forma HD ideal for heavy duty areas, will fit any size area with no limitation on size. Adhered to floor, so no movement or shrinkage issues. The 12mm Forma version can be surface mounted without a matwell as long as there is door clearance. Forma HD is for internal use areas only.

Key features

- Standard service is 4 p.a. (quarterly)
- Serviced on site
- Yarn = 100% ECONYL®
- Backing = 100% recyclable PVC
- 12mm option shallow wells and surface mounted
- 18mm option deep wells 18mm and above
- Permanently fitted adhered down on site
- Fire resistance = Bfl s1
- Antistatic = <2kV
- Wear resistance heavy to severe
- BS8300 / DDA / ADA compliant
- 5 colour choices
- Indoor use only

Please Note: 10cm is added to the size of each mat in both directions as standard procedure by the logo's team to give the fitter the material required to cut. If Screeding, Plywood, PVC or Aluminium ramped edging is required use code 005833



Note: Lead time is 5- 6 weeks



Forma HD – logo

Forma incorporating a fitted Logo Mat



Forma HD serviced on site quarterly with inset fitted Logo mat service via service driver fortnightly.

Use the Forma HD code below plus the size of fitted Logo mat code.

Always confirm with the customer the size of their fitted logo mat and where they would like it positioned.

Forma HD Options:	FHD 12mm	FHD 18mm
Measures up to 2.23m²	108156	136296
Measures up to 3.34m²	108157	136297
Measures up to 4.46m²	108158	136298
Measures up to 5.57m²	108159	136299
Measures up to 6.69m²	108160	136300
Measures up to 7.8m²	108161	136301
Measures up to 8.92m²	108162	136302
Measures up to 10.03m²	108163	136303
Measures up to 11.15m²	108164	136304
Measures up to 13.94m²	108165	136305
Measures up to 18.58m²	108166	136306
Measures up to 24.16m²	108167	136307
Measures over 24.17m²	See pricing	

Logo Mat Size Options:	
Measures up to 1.275m²	006818
Measures up to 2.07m²	006819
Measures up to 2.76m²	006820
Measures up to 3.75m²	007479
Measures up to 3.9m²	006821

Quadra HD - Plain & Logo

Fitted Entrance Matting System - Internal only



Quadra HD is serviced on site quarterly by the Matwell Cleaning Team and can also incorporate a fitted logo mat inset option at an extra price which is serviced fortnightly by the service driver.

Use the Fitted Logo Mat Codes on page 42 in conjunction with the Quadra codes below for the inset Logo option.

Always confirm with the customer the size of their fitted logo mat and where they would like it positioned.



Key features

- Standard service is 4 p.a. (quarterly)
- Serviced on site
- Yarn = 100% ECONYL®
- Backing = 100% recycled PVC
- 12mm option shallow wells and surface mounted
- Permanently fitted adhered down on site
- Wear resistance heavy to severe
- BS8300 / DDA / ADA compliant
- Standard Colour: Anthracite 607to ordeer stocked
- Other colours available at additional cost
- Internal use only

Please Note: If Screeding, Plywood, PVC or Aluminium ramped edging is required use code 005833



Options:	Quadra HD 12mm
Measures up to 3m²	17038911
Measures up to 4.5m²	17038923
Measures up to 6m²	17038959
Measures up to 7.5m²	17038972
Measures up to 9m²	17038984
Measures up to 10.5m²	17039186
Measures up to 12m²	17039198
Measures up to 13.5m²	17039204
Measures up to 15m²	17039216
Measures up to 16.5m²	17039228
Measures up to 18m²	17039230
Measures up to 19.5m²	17039241
Measures up to 21m²	17039253
Measures up to 22.5m²	17039265
Measures over 22.5m² +	See Pricing

Note: Lead time is 5- 6 weeks

Tergo HD

Fitted Entrance Matting System – must be under a canopy



Tergo can also be combined with Forma, in internal areas to provide a scrape and absorb effect.



Tergo in an exterior sheltered matwell.

Ideal for heavy duty areas, will fit any size area no limitation on size, adhered to floor so no movement or shrinkage issues. Tergo HD is for external use areas under a canopy. Same textile as Tuff mats



Key features

- Standard service is 4 p.a. (quarterly)
- Serviced on site
- Yarn = 100% ECONYL®
- Backing = 100% recyclable PVC
- 12mm option shallow wells and surface mounted
- 18mm option deep wells 18mm and above
- Permanently fitted adhered down on site
- Fire resistance = Bfl s1
- Antistatic = <2kV
- Wear resistance heavy to severe
- BS8300 / DDA / ADA compliant
- Single colour choice = grey
- External use under a canopy only

Please Note: If Screeding, Plywood, PVC or Aluminium ramped edging is required use code 005833



Options:	FHD 12mm	FHD 18mm
Measures up to 2.23m²	16459386	16459544
Measures up to 3.34m²	16459398	16459556
Measures up to 4.46m²	16459404	16459568
Measures up to 5.57m²	16459416	16459570
Measures up to 6.69m²	16459428	16459581
Measures up to 7.8m²	16459430	16459593
Measures up to 8.92m²	16459441	16459600
Measures up to 10.03m²	16459453	16459611
Measures up to 11.15m²	16459465	16459623
Measures up to 13.94m²	16459477	16459635
Measures up to 18.58m²	16459489	16459647
Measures up to 24.16m²	16459490	16459659
Measures over to 24.17m2	See Pricing	See Pricing

Note: Lead time is 5- 6 weeks

Foris - fitted - Plain & Logo

Internal only



Foris is designed as a secondary matting system which would usually come after a Forma HD matwell or in alternatively in a shallow matwell which can not take Forma. Foris is available in the same colours as the Forma HD and is 100% ECONYL®.

Use the Fitted Logo Mat Codes on page 42 in conjunction with the Quadra codes below for the inset Logo option.

If you are supplying a inset logo fitted within Foris always confirm with the customer the size of their fitted logo mat and where they would like it positioned.

Key features

- Standard service is 4 p.a. (quarterly)
- Serviced on site
- Yarn = 100% ECONYL®
- Backing = 100% recyclable PVC
- 9-10mm shallow wells and surface mounted
- Permanently fitted adhered down on site
- Fire Resistance = Bfl s1
- Antistatic = <2kV
- Wear resistance medium to heavy
- BS8300 / DDA / ADA compliant
- 5 colour choices
- Internal use only



Please Note: If Screeding, Plywood, PVC or Aluminium ramped edging is required use code 005833

Options:	Foris 10mm
Measures up to 2.23m ²	16459192
Measures up to 3.34m ²	16459209
Measures up to 4.46m ²	16459210
Measures up to 5.57m ²	16459222
Measures up to 6.69m ²	16459234
Measures up to 7.8m ²	16459246
Measures up to 8.92m ²	16459258
Measures up to 10.03m ²	16459260
Measures up to 11.15m ²	16459271
Measures up to 13.94m ²	16459283
Measures up to 18.58m ²	16459295
Measures up to 24.16m ²	16459301
Measures up to 30.66m ²	16459313
Measures up to 37.16m ²	16459325
Measures up to 44.60m ²	16459337
Measures up to 55.75m ²	16459349

Note: Lead time is 5- 6 weeks

PHS Smart Step – fitted

Internal only

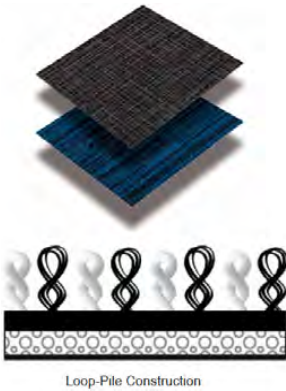


PHS Smart Step is an exceptionally versatile modular entrance matting system that creates a stunning first impression in spaces that need to create an effective barrier against the elements.

Designed to provide a superior combination of performance and aesthetics, the ECONYL® dual-fibre loop polyamide yarn construction will stop dirt and moisture at the door, while allowing easy removal during maintenance. The tiles are supplied in 50cm x 50cm size and in a 9.9mm gauge with each box containing 12 tiles which assemble to 3m².

Key features

- Standard service is 4 p.a. (quarterly)
- Serviced on site
- Yarn = 100% ECONYL®
- Backing = 100% PVC Free
- 9.9mm shallow wells and surface mounted
- Permanently fitted adhered down on site
- Fire Classification = Cfl s1
- Antistatic = <3.5kV
- Wear resistance medium to heavy
- BS8300 / DDA / ADA compliant
- 4 colour choices
- Internal use only



Options:	Smart Step 9.9mm
Measures up to 2.30m ²	17038030
Measures up to 3.34m ²	17038042
Measures up to 4.46m ²	17038054
Measures up to 5.57m ²	17038066
Measures up to 6.69m ²	17038078
Measures up to 7.8m ²	17038080
Measures up to 8.92m ²	17038091
Measures up to 10.03m ²	17038108
Measures up to 11.15m ²	17038110
Measures up to 13.94m ²	17038121
Measures up to 18.58m ²	17038133
Measures up to 24.16m ²	17038145
Measures up to 30.66m ²	17038157
Measures up to 37.16m ²	17038169
Measures up to 44.60m ²	17038194
Measures up to 55.75m ²	17038200

Note: Lead time is 5- 6 weeks

Megahold & Anka-pad

Internal only

Megahold is a specialist backing option available from PHS specifically designed for hard floor surface to improve mat stability and help prevent movement. In combination with our unique Anka-pad system, the Megahold also solves mat movement problems on textile surfaces such as carpets.



➤ Ideal for heavy traffic areas such as retail, shopping centres and airports



Installation of Megahold™ Mats

New mats should be washed before use. Ensure that the back of the mat is free of dirt and water.

Walk across the mat to activate suction cups.

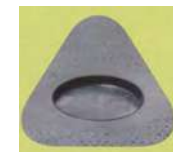
Mat in use - resistant to movement.



Options:	Code
Ultra Plus - Megahold - 85 x 150cm	17037890
Ultra Plus - Megahold - 115 x 180cm	17037906
Ultra Plus - Megahold - 85 x 300cm	17037918

Options:	Code
Logo - Megahold - 85 x 150cm	17037920
Logo - Megahold - 115 x 180cm	17037931
Logo - Megahold - 85 x 300cm	17037943

Options:	Code
Plain - Megahold - 85 x 150cm	17037955
Plain - Megahold - 115 x 180cm	17037967
Plain - Megahold - 85 x 300cm	17037979



Megahold unique suction cup design

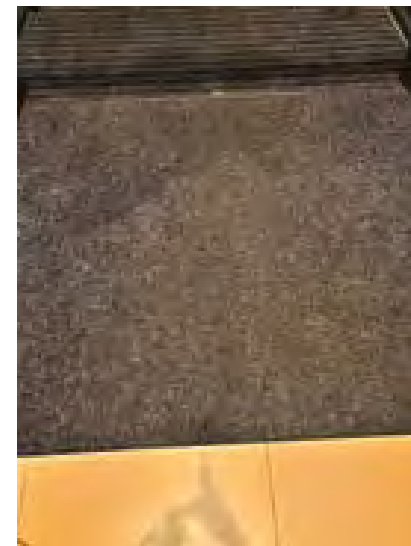


Megahold with Anka-Pad

Carpet Option:	Code
Anka-Pad Medium - 70 x 130cm	17037980
Anka-Pad Large - 95 x 160cm	17037992

Fixed entrance mat cleaning

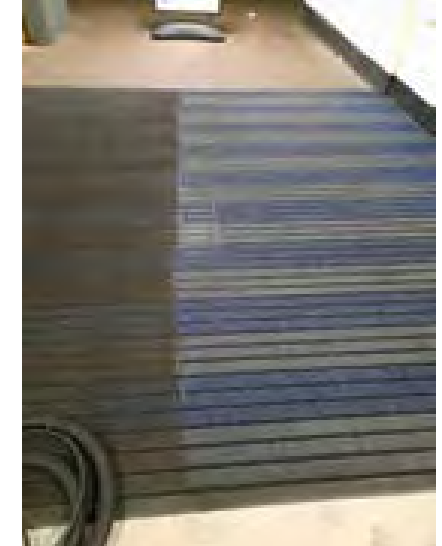
Internal only



Before cleaning



After cleaning



Our team of mat cleaners will attend your site and give a regular clean to customers' own fixed entrance matting. For areas larger than 30 sqm, please contact the floorcare team. Cleaning matting prolongs it's life and we can offer our own replacement products when mats lose their effectiveness. Without regular deep cleaning, fixed entrance mats will wear quicker and be less effective as a barrier to dirt and water.

For confirmation on whether your matting is able to be serviced, please send a picture to our Floorcare team.

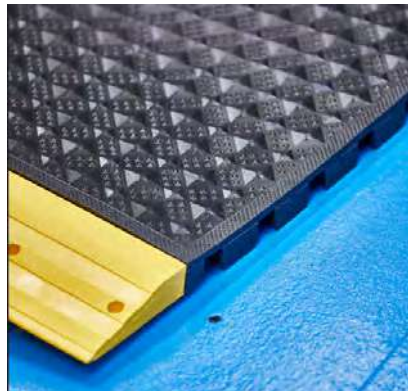


- **Key features**
- Standard service is 4 p.a. (quarterly)
 - Serviced on site
 - Indoor mats only
 - Best results on mats with textile component
 - Avoid all coir matting
 - Effective on most types of entrance mat

Options:	Code:
Fixed Entrance Matting Clean less than 10sqm	16408135
Fixed Entrance Matting Clean less than 10-30sqm	16408147



PHS Work Matta™ – fitted



PHS Work Matta™ is a 25mm modular, anti-fatigue surfacing engineered to tolerate the harsh conditions of industrial and manufacturing environments whilst promoting well being and fighting fatigue.

Key features

- Annual safety Inspection (1 pa)
- 3 or 5 Year Agreements
- Made form 85%+ recycled content
- End of life recyclable product
- ASTM, ADA & UFAS Accessibility Standards
- Wear resistance heavy to extreme
- Available it Grit Finish for oily environments
- Available in open or closed formats

All Work Matta™ flooring tiles utilise a unique compression column construction, specifically engineered to encourage proper body alignment, while promoting a calculated degree of movement or 'sway'. This almost imperceptible motion stimulates the muscles and promotes the efficient circulation of blood through the veins – especially in the legs – which is key to preventing worker fatigue and discomfort.

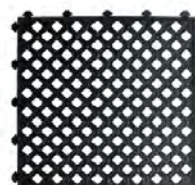
WHY ARE EERGONOMICS SO IMPORTANT?

Oxygenated blood is pumped by the heart, through arteries, around our body which uses the oxygen as fuel. The blood then returns, via the veins, to our heart and lungs for 'refueling' and the process begins again with re-circulation of oxygenated blood through the arteries. Blood pressure and the normal contracting and relaxing of muscles around veins as we move, facilitates the return journey of blood through the one-way valve system in veins. This process can be inhibited when we have to stand on a hard surface or our movement is restricted for prolonged periods. Work Matta™ ergonomic flooring is designed to help promote efficient blood circulation.

SURFACE OPTIONS



Diamond Shield



Open



Smooth Top



Hi-Definition Edging



Our recycled products are made from at least 85% recycled materials.

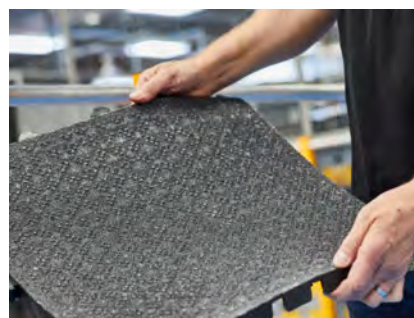


Product Code:

Work Matta 25mm

Spw Mark Gamble or Paul Hipkiss

17037256

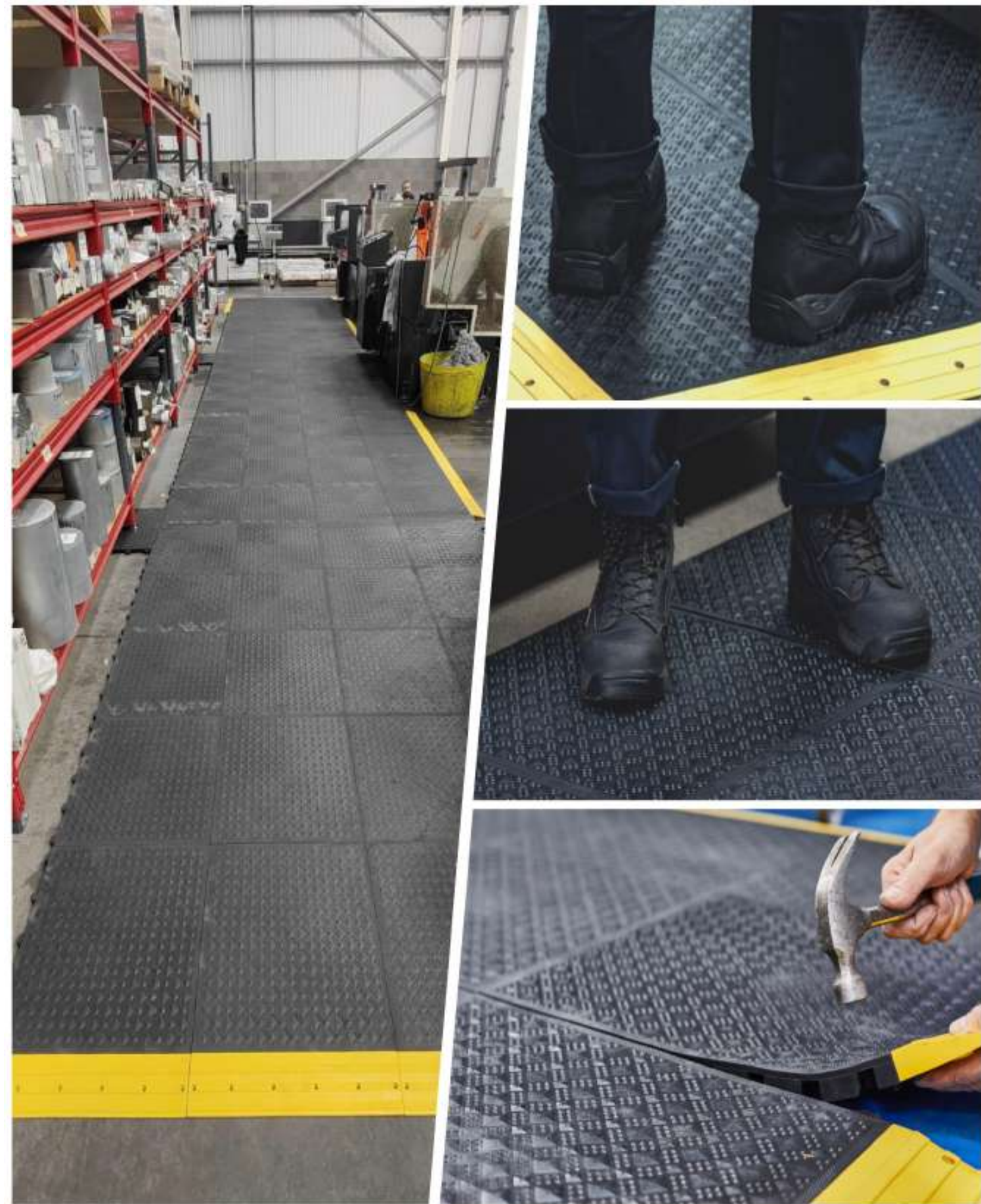


Grit Finish for Oily environments

Tile Size: 500mm x 500mm
(50cm x 50cm)

Edge size: 100mm x 500mm
(10cm x 50cm)

Survey required by Floorcare Specialist





phs Group

- Wash
- Work
- Treat
- Heat
- Spec

Matting

5 RFE

www.phs

029 2