



Our new  
you everywhere  
Aww.

**phs** Group

the  
**forum**



➤ **Doing our bit for the environment**





# the forum

Welcome to **phs** Group

## > Why phs?

**phs** Group provides Washroom, Healthcare and Floorcare hygiene services, plus a range of Specialist services to more than 120,000 customers, over 300,000 customer locations.

Our products and services play a vital role in ensuring our customers premises are safer and healthier places, meeting the changing needs of society. Because we're **Next door. Everywhere**, we carry out an incredible 20,000 services visits each day.





# We do more than you think

Our Corporate Social Responsibility goals and commitments are in the here and now; the focus of our values and priorities are at the forefront of our mindset, our modus operandi, embedded throughout our organisation and forming part and parcel of our daily actions.

What makes **phs** different? It's our commitment to **doing the right thing.**

We're helping clean up the ocean from plastic by using ghost fishing nets to create **ECONYL®** floor mats.

Our patented products deliver significant water and cost savings

Our air purifiers help to improve employee well-being.

By using **phs**, organisations can make a difference to the environment and their bottom line as well as telling a good news story.



Our CSR position is broken into 4 parts and aims to support The Forum's sustainability strategy.

For more information on our CSR offering, download our brochure **here.**

Water

Land

Air

Wellness





# Put your best foot forward with **phs** floorcare

## > Why **phs** mats?

At **phs**, all our matting solutions are made with **ECONYL®** yarn which helps to support the environment, and your floors. **ECONYL®** regenerated nylon is made by recovering nylon waste, such as fishing nets from the oceans and aquacultures, fabric scraps from mills and carpets destined for landfills. Our mats not only keep the oceans clean, but also keep floors clean too.

**51%** of plaintiffs win liability claims for slips and falls

Source: Jury Verdict Research

**Slips,** trip and falls are the most common injury to employees

Source: HSE

**90%** of slips occur when the floor is wet

Source: HSE

**40%** of any cleaning budget is used to clean the floors

Source: Carpet and Floor Covering Review

**41%** 

of workplace injuries are caused by...  
**slips, trips and falls**

Source: International Workplace

**70%** 

of the dirt entering your building is from  
**the soles of people's shoes**

Source: Dept. of Environment



# Fitted Mats

3 x the protection, 3 x the style. 3 different tile designs with flexible combinations absorb heavy duty moisture and scrape off excessive dirt.



Prior HD- is a flexible multi-purpose modular flooring product with a structure that incorporates resilient scrapers to remove particulate dirt. Prior can also be installed together with Tergo or Forma in recessed mat wells, or surface mounted with edging system. Installing Prior tiles outside traffic areas can minimise the total cost of the installation as well as creating a unique design feature.

Tergo - modular tiles are manufactured with heavy duty textile inserts made of 100% polyamide monofilaments for a superior brushing action. Tergo works as a first line of defence and can be combined with Forma tiles for a complete entrance flooring solution. Tergo can be installed in sheltered outdoor areas, surface mounted or fitted in mat wells.

Forma is suitable for a wide variety of applications, from office buildings to high traffic areas such as airports and shopping centres. Combining Tergo and Forma tiles together on the same installation further increases performance on dry dirt pick up by 50%.

| Product Specification |   |
|-----------------------|---|
| Sizes                 | 20x20cm tiles fit any area  |
| Thickness             | 12mm or 18mm  |
| Colours               | Available in 12 colours including, Amethyst, Diamond, Earth, Emerald, Jupiter, Mars, Mercury, Moon, Neptune, Ruby, Uranus, Venus. |

**Key Features :**

Professional installation ensures a high quality, impactful finish. Flexibility of the tiles means installations can be over large areas & personalised to the needs of the business.

The durability of fitted mats mean they are the ideal first line of defence against dirt entering a building & perfect for high footfall areas.

# Foris – fitted

Internal only



These are 100% ECONYL® which are made out of 12 colour ways. Unicolour are plain colours and show dirt up very quickly therefore we have produced a range of flecked / multi-coloured textile which are a mix of colours to help camouflage day to day dirt and ensure the mat remains looking good up to the day of its exchange.

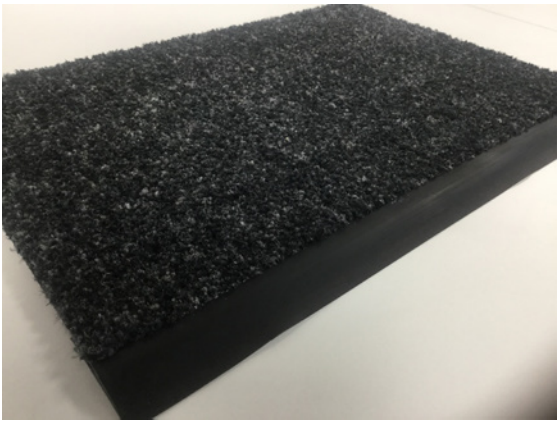
Above is a range called Foris which are the same colours as used in the Milliken Forma HD. Foris has a scraper filament called a monofilament that stands up to the heavy foot traffic.

- Key features
- Standard service is 4 p.a. (quarterly)
  - Serviced on site
  - Yarn = 100% ECONYL®
  - Backing = 100% recyclable PVC
  - 9-10mm shallow wells and surface mounted
  - Permanently fitted adhered down on site
  - Fire Resistance = Bfl s1
  - Antistatic = <2kV
  - Wear resistance medium to heavy
  - BS8300 / DDA / ADA compliant
  - 5 colour choices
  - Internal use only



**BS8300  
COMPLIANT**

**ON-SITE  
SERVICE**



| Options:                           | Foris 10mm |
|------------------------------------|------------|
| Measures up to 2.23m <sup>2</sup>  | 16459192   |
| Measures up to 3.34m <sup>2</sup>  | 16459209   |
| Measures up to 4.46m <sup>2</sup>  | 16459210   |
| Measures up to 5.57m <sup>2</sup>  | 16459222   |
| Measures up to 6.69m <sup>2</sup>  | 16459234   |
| Measures up to 7.8m <sup>2</sup>   | 16459246   |
| Measures up to 8.92m <sup>2</sup>  | 16459258   |
| Measures up to 10.03m <sup>2</sup> | 16459260   |
| Measures up to 11.15m <sup>2</sup> | 16459271   |
| Measures up to 13.94m <sup>2</sup> | 16459283   |
| Measures up to 18.58m <sup>2</sup> | 16459295   |
| Measures up to 24.16m <sup>2</sup> | 16459301   |
| Measures up to 30.66m <sup>2</sup> | 16459313   |
| Measures up to 37.16m <sup>2</sup> | 16459325   |
| Measures up to 44.60m <sup>2</sup> | 16459337   |
| Measures up to 55.75m <sup>2</sup> | 16459349   |



## Image/Logo mats

Image/Logo mats offer limitless design opportunities. From creating a complete brand experience, to providing additional health and safety signage.



150 standard colour palette ink jet design can be blended to create over 1 million unique colours. Create even the most complex photo-realistic and logo designs as well as rich and saturated solid shades.

High definition, clear text and more realistic effects – our image/logo mats have been designed using ink jets operating at 76 dots per inch allowing us to achieve greater clarity of design, finer text definition, shadowing, shading and 3D effects.

### Key benefits :

There is a wide range of applications for image and logo mats. Most visible are mats in retail and leisure businesses where the mats can present very powerful messages.

Image mats can transform a drab, corporate space into a vibrant and colourful one.

### Key features :

From receptions to board rooms, logo mats present powerful and professional statements in key locations across businesses.

Any high quality image can be printed on mats today. The printing process is flexible enough to accommodate virtually any design and colour combination.

PPE (personal protective equipment) safety message mats are becoming increasingly popular in businesses where staff are moving from office to factory floor.

### Product specification

|             |  |
|-------------|--|
| Composition | 100% polyamide twisted and heat set multifilaments             |
| Sizes       | 120x85cm, 150x85cm, 180x115cm, 240x115cm, 250x150cm, 350x115cm |
| Thickness   | 8mm  |

## CASESTUDY

LOCATION  
The Forum, Norwich

INDUSTRY  
Floorcare



With ongoing pressure and challenges when it comes to floorcare maintenance due to immense footfall, it takes a great deal of time and energy from the cleaning team to make them front line perfect.

### BACKGROUND

The Forum is in the heart of Norwich city centre welcoming nearly 2 million visitors per year. It is the home of the Norfolk and Norwich Millennium Library, Citizens Advice Bureau Norwich, Pizza Express, Café Bar Marzano, and BBC East. Organisations from across the region host events inside and outside of the building - from markets, fairs and exhibitions to community celebrations, charity events and live performances.

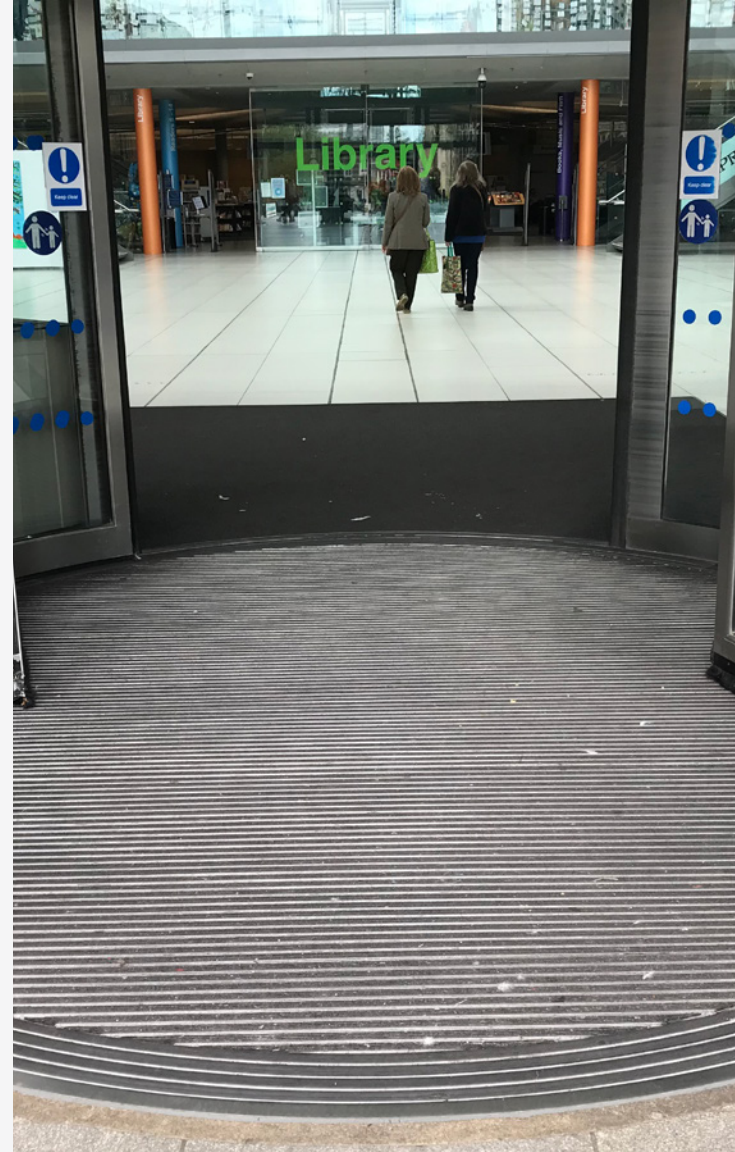


## CHALLENGE

The existing matting system had come to the end of its life resulting in additional cleaning and maintenance to ensure clean and safe floors inside the building.

With footfall of up to 5000 per day, the new entrance matting needed to be hard wearing, highly effective at capturing dirt and moisture from incoming visitors, as well as designed with accessibility in mind for all.

Further, the management team were also exploring options to promote their branding and to enhance visitors first impression when visiting the iconic building.



## SOLUTION

Our new partnership has successfully included the installation of Fitted Forma HD and Fitted Foris matting, with a bespoke fitted logo insert. Most importantly, the fitted barrier matting has been installed on an ongoing maintenance agreement to maintain optimal effectiveness and preventing the spread of dirt.

Both unique textile inserts are manufactured with ECONYL® yarn which is 100% regenerated polyamide sourced from pre-consumer and post-consumer waste. This makes it one of the most sustainable solutions with commitment to respecting the environment on the market.

Foris combines two types of high resilience polyamide fibres: monofilaments for brushing action and multifilaments for the absorption effect, twisted together and heat set before the tufting process begins. The open tufting construction provides room for dirt storage, whilst allowing easy dirt release during maintenance.

The Forma HD modular tiles fit any size or shape of mat well with the minimum of waste. Damaged sections can be replaced by changing only the individual tiles and not the complete unit as with other systems. The product is exceptionally durable and designed for high traffic areas and in the various colours available is excellent at concealing and retaining dirt and moisture whilst complimenting the interior design.





Commercial waste management, waste collection and disposal service are a necessity for almost any business, especially those with washrooms, large premises, or communal areas etc.

Our waste management services help to dispose of hygiene waste such as sanitary products discreetly and in an environmentally friendly way.





## Transforming the future of **waste management**

We collect around **65,000 tonnes** of hygiene waste every year from our customers including nappies, incontinence, and sanitary products.

If disposed of in a landfill, it could take more than

**500 years**

for some items to decompose.

However, thanks to our pioneering **phs** LifeCycle Strategy, the waste we collect is diverted away from landfill and taken to energy recovery facilities (ERFs) to create low carbon electricity, which is sent to the National Grid to power industries, schools and even homes.

Whilst our goal is to divert **up to 95%** of our customers' hygiene waste away from landfill into energy recovery facilities, **we're on target to reach 80% by the end of 2022.**



## **ECLIPSE™ XTRA** sanitary disposal bin



### Key features :

- More capacity for high footfall areas
- Antimicrobial material moulded into the lid creating a hygienic surface
- Cleaned with EnviroSan ® germicide to combat 99.99% of bacteria

### > Hygienic and discreet sanitary disposal service

The **ECLIPSE™ XTRA** Sanitary Disposal Bin range been designed for ultimate ease of use, featuring a side opening flap, convenient pedal location and internal masking flaps to conceal the contents of the unit.

The smart design of **ECLIPSE™ XTRA** ensures that the sanitary bin is easily located either side of the WC, below seat level. The range is constructed from a highly durable ABS plastic which helps keep the units looking good no matter how often they're used. Designed for workplaces and business with high footfall.

### Product innovation & design

- The flap is specifically designed to mask the contents of the bin from sight
- Foot pedals for hygienic operation, can be located either side of the cubicle
- Low profile design, sits below the toilet seat, avoids people contacting the bin

### The Nickel collection

Designed to complement any washroom decor, the premium Nickel collection features a modern metallic finish, which adds a touch of class to any environment.

### Fully compliant

Fully licensed and compliant with all waste management regulations, a full auditable waste trail is provided.

### Environmentally conscious

The bin is fully recycled at the end of its life.

### LifeCycle

The **phs** LifeCycle strategy diverts customer waste away from landfill. It is instead taken to nearby energy recovery facilities where it is turned into power for the local community to use, providing a sustainable waste solution.



# MAXI AND MAXI X nappy disposal



The Maxi nappy disposal unit is a 45 litre nappy bin that is ideal for areas that are limited on space, or used less frequently.



The Maxi X offers a large 60 litre nappy disposal unit that is ideal for high usage areas.

## > Hygienically dispose of nappy or incontinence waste

### Hygienic

The Maxi is pedal operated, removing the need for hand contact and reducing the risk of cross infection. They are also treated with EnviroSan® Active, a safe and effective germicide which incorporates a natural enzyme to combat harmful bacteria and odour. This reduces bacteria levels by 99.99%, is certified against HIV, Hepatitis B and Hepatitis C, and is the only germicide to conform to BS1276 and BS13727.

### Practical

Made from strong polypropylene, these units are scuff resistant with a smooth outer finish.

### Efficient

The Maxi unit is provided with our 24/7 free emergency product service, helping you deal with unforeseen issues or unexpectedly high visitor numbers. We're here 24/7 to take your calls, and will carry out an emergency service on the next working day (working days are Monday- Saturday).

### Fully compliant

phs are fully licensed and compliant with all waste management regulations including Duty of Care. A full auditable waste trail is provided, offering peace of mind that your sites' waste is being dealt with safely and with respect for the environment.

Key features

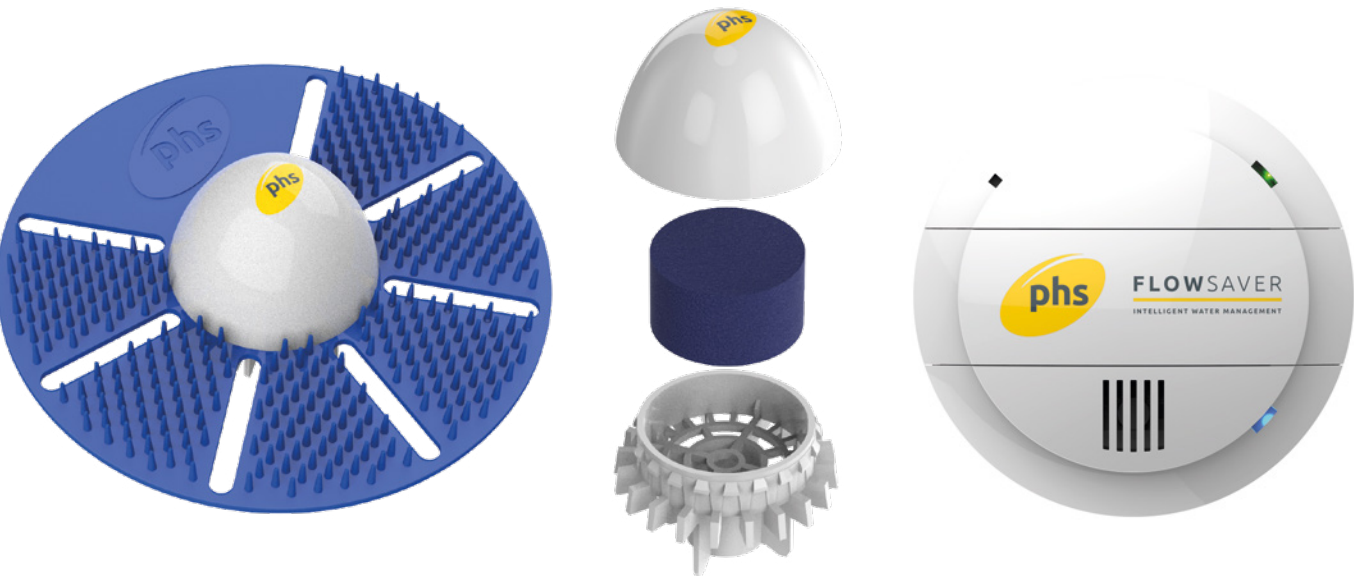
- Compact unit for areas with limited space
- Pedal operation removes the need for contact by hand

| Key facts    |                   |                          |
|--------------|-------------------|--------------------------|
|              | Maxi              | Maxi X                   |
| Size         | 34 x 56.5 x 43 cm | 54.1cm x 60.3cm x 35.9cm |
| Capacity     | 45 litres         | 60 litres                |
| Construction | Polypropylene     | Polypropylene            |

# Water saving products

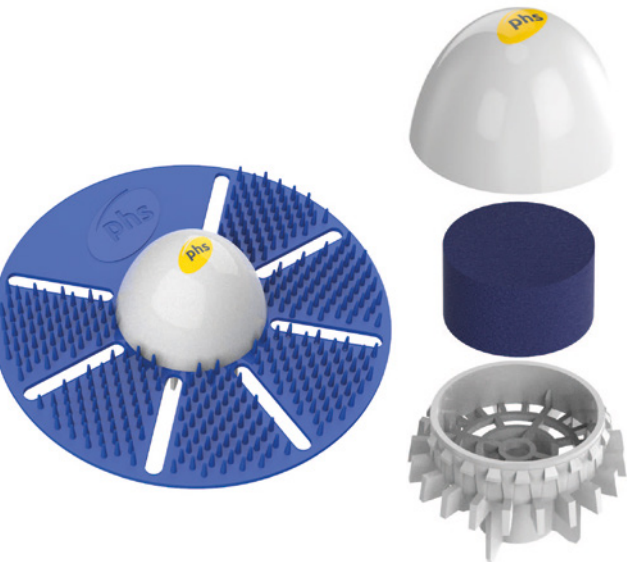
Our range of revolutionary, patented, water-efficient products **ECOSHIELD 3** and the **FLOWSAVER URINAL** water management system are helping businesses like **The Forum** to save water and reduce bills (up to 70% saving).

Water is one of **phs'** main Corporate Social Responsibility (CSR) pillars - whether that's installing water saving products in customer premises, turning the tide with **ECONYL®** floor mats or our bid to convert flushers (people who flush sanitary products) into binners to avoid water pollution, we're on a mission to do more.





# ECOSHIELD 3



Key features:

- Reduces blockages and keeps urinal traps and pipe work clear
- Nurazyme™ bio-block breaks down the build-up of uric salt using natural enzymes and ‘friendly’ bacteria
- Connects to the urinal trap allowing it to be installed in all standard urinals and troughs
- Use in conjunction with the Flow-saver, Micrakleen and Autosan for maximum hygiene results

> Water is a precious resource, something we tend to forget in a country where there seems to be plenty of it. Using water more efficiently is a smart way to save energy and money, while also delivering on commitments to cut energy and resource wastage.

**phs** leads the market in water management systems, urinal services and sanitising and cleaning products for the washroom. We’ve been developing innovative and patented water management products for decades. From flush and water management controls, urinal sleeves to cistern sanitisers, our products help prevent blockages, eliminate odour and reduce your running costs.

### The perfect partnership

For a water management system to work effectively, it requires two things: firstly, a device that regulates the flow of water through the urinal and secondly, a urinal sleeve that can eliminate urinal odours and blockages. And **phs** can supply both.

**ECOSHIELD 3** has been specifically formulated to work in conjunction with **FLOWSAVER URINAL**, a water management system that reduces water usage by up to 70% per cistern. The **ECOSHIELD 3** helps prevent blockages, keeping urinal traps and pipework clear, whilst the **FLOWSAVER URINAL** prevents unnecessary urinal

flushing, flushing exactly the right amount of water for your usage and location. Working together, they reduce washroom water usage, control odour, reduce future maintenance costs and eliminate the use of harmful cleaning products.

The common mistake with water management systems, is to implement one product without the other. When that happens, there can be a problem with odour. As the water only flows during peak times, urine and its associated deposits can be sat in the urinal and over time, can begin to block pipework. The natural reaction is to turn off the water management system, to increase the flow of water through the system, so no water savings are achieved.

Equally, introducing the urinal sleeve without the water management system means that too much water flows through the system, washing away the bio-block that is part of the product, so that it can no longer break down the uric salt and limescale. In both cases, the customer wrongly, but understandably, assumes that the products aren’t working for them.

# FLOWSAVER URINAL



Key features:

- Can save up to 80% of water against uncontrolled cisterns
- Prevents unnecessary urinal flushing
- Intelligent infra-red sensor
- Waterwise recommended

> The award-winning **FLOWSAVER URINAL** uses innovative technology to prevent unnecessary urinal flushing when your washroom is empty, and minimal flushing when it is in use, saving up to 80% of urinal flush water.

### Save water, save money

Uncontrolled or excessive urinal flushing can waste water and money. That’s why the **FLOWSAVER URINAL** water management system is designed to match the urinal flush cycle to the footfall using the urinal, ensuring both optimum hygiene levels and savings.

### Intelligent operation

The **FLOWSAVER URINAL** uses an electronic sensor unit which is linked to a solenoid valve installed in to the water supply pipe of the urinal cistern. The infrared sensor detects movement up to 3 metres away and schedules automatic flushes accordingly. If the **FLOWSAVER URINAL** detects a person entering the washroom space, (this is signalled by the flash of a small blue LED located on the front cover) then it will implement a flush 30 minutes later. If no movement is detected, no flush will occur.

During high usage periods, where the number of detections exceeds 40, a flush will occur every 15 minutes irrespective of switch settings.

During quiet periods i.e. night or weekends, the **FLOWSAVER URINAL** will only instigate a flush every 12 hours (this hygiene flush is a legal requirement).

If continual movement is detected throughout the day, the **FLOWSAVER URINAL** default setting will be to implement a flush every 30 minutes, however this can be changed to intervals of either 15, 45 or 60 minutes depending on site requirements.





**p hs** Group, Block B, Western Industrial Estate  
Caerphilly CF83 1XH

**07721 341 072 | [ryanpettit@p hs.co.uk](mailto:ryanpettit@p hs.co.uk) | [p hs.co.uk](http://p hs.co.uk)**

